

TCE: *tess37749396.01*

$P = 13.476$ Day

$T_0 = 1392.284$ BJD

$R_p \sim 1.788$

$R_p/R_{star} \sim 0.026$

$T_{dur}/P \sim 0.006$

$T_{dur} \sim 1.862$ hr

$T_{12}/T_{14} \sim 0.098$

$SN_{BLS} \sim 39.4$

$SNR \sim 16.0$

Star: TIC37749396

$R_* \sim 0.6R_{\odot}$

$M_* \sim 0.6M_{\odot}$

$T_{eff} \sim 4049K$

$logg \sim 4.66$

RA = 4.773

DEC = -9.966

$T_{mag} = 8.5 (+0.1)$

$J - K = 0.83$

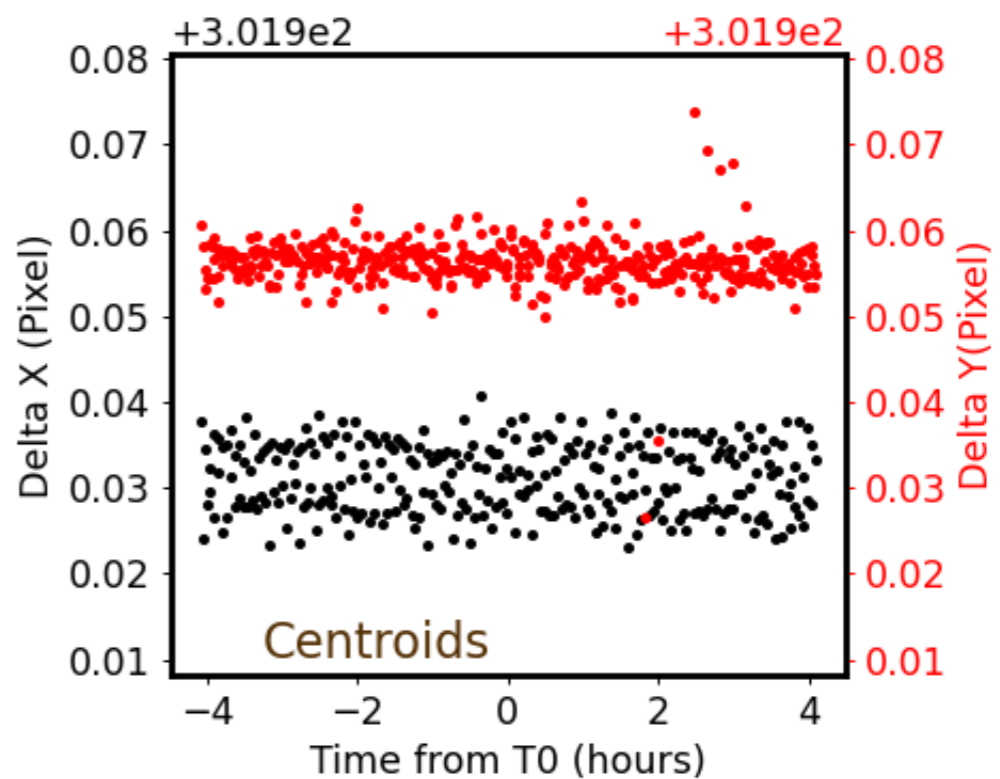
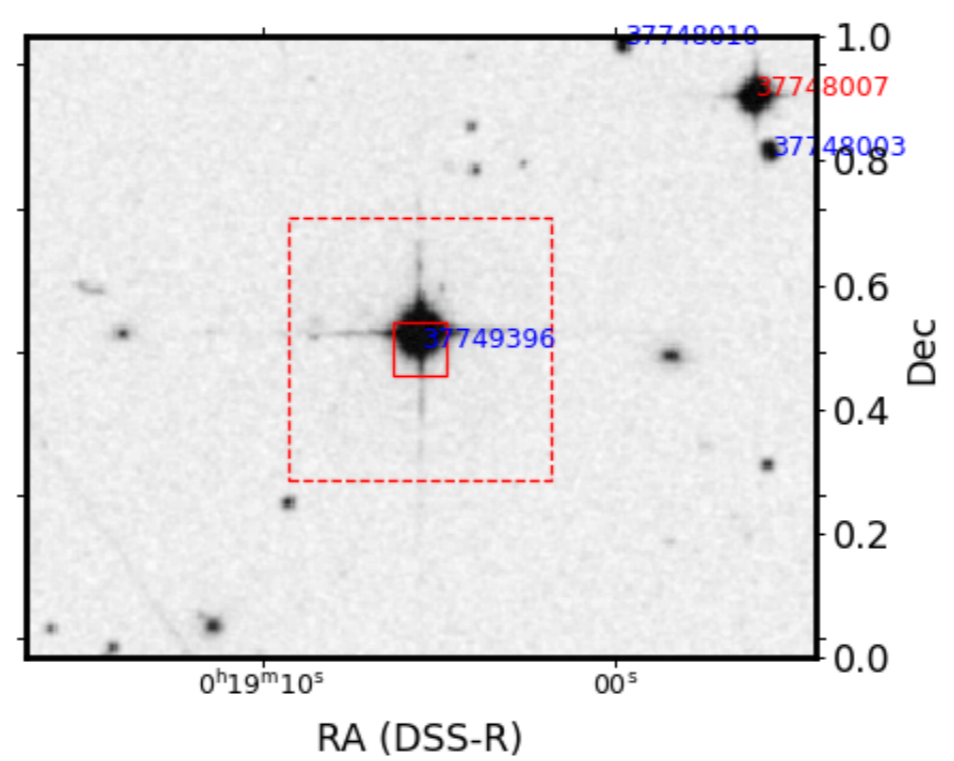
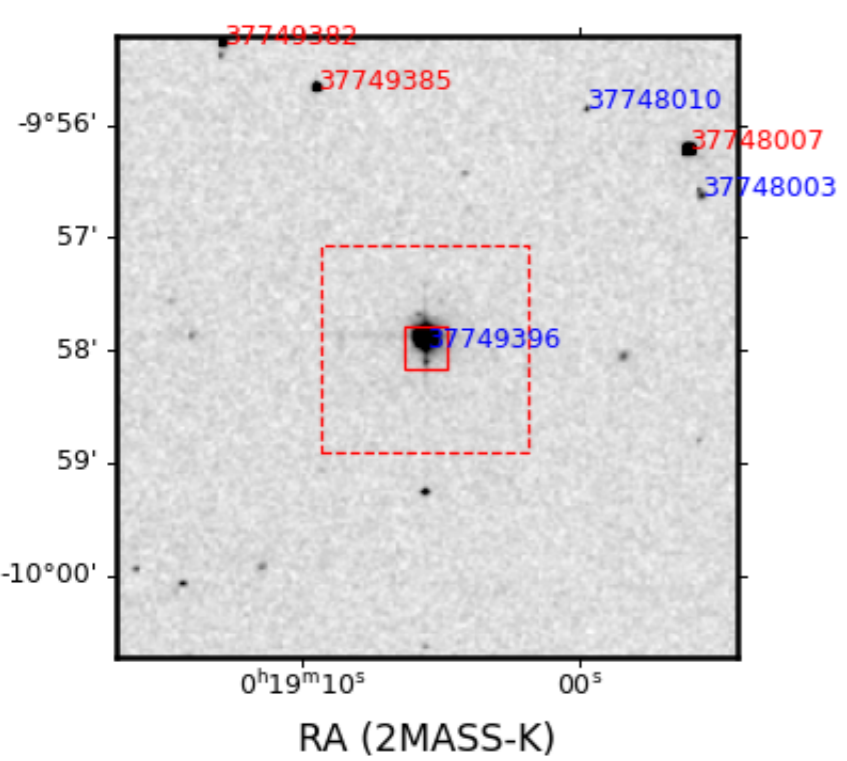
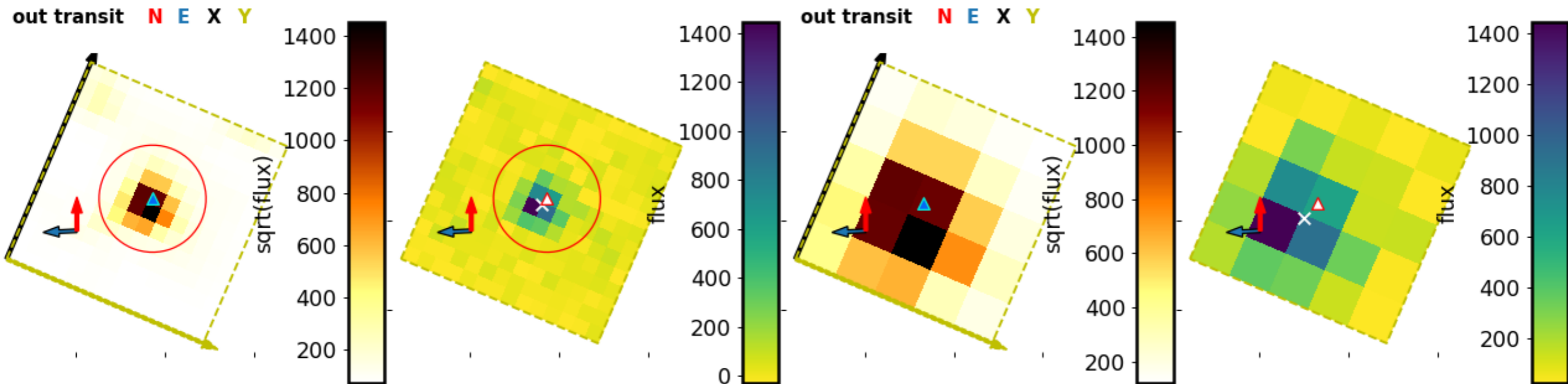
$gb - gr = nan$

$par = 49.5$

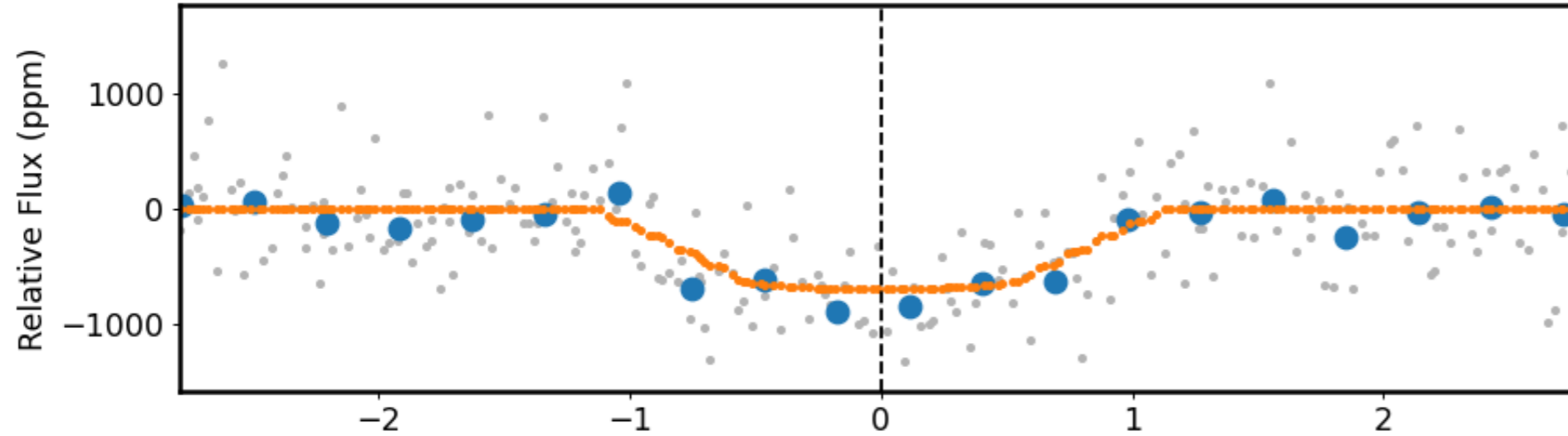
$pmra = -36.6$

$pmdec = -301.4$

37749396.01: Centroid Shift and Ephemeris Match (to most significant object)



37749396.01: Detailed transit fitting information



MCMC parameters

per: 13.475822991149156

inc: 89.43068983667332

ecc: 0.0

w: 90

u: [0.2258080733745602, 0.22083670874768202]

fp: None

t0: 3225.0114052 [3225.0086100, 3225.0136267]

b: 0.5173887 [0.2503935, 0.7200998]

a: 52.0712266 [42.6711658, 60.0143504]

rp: 0.0254693 [0.0243129, 0.0264301]

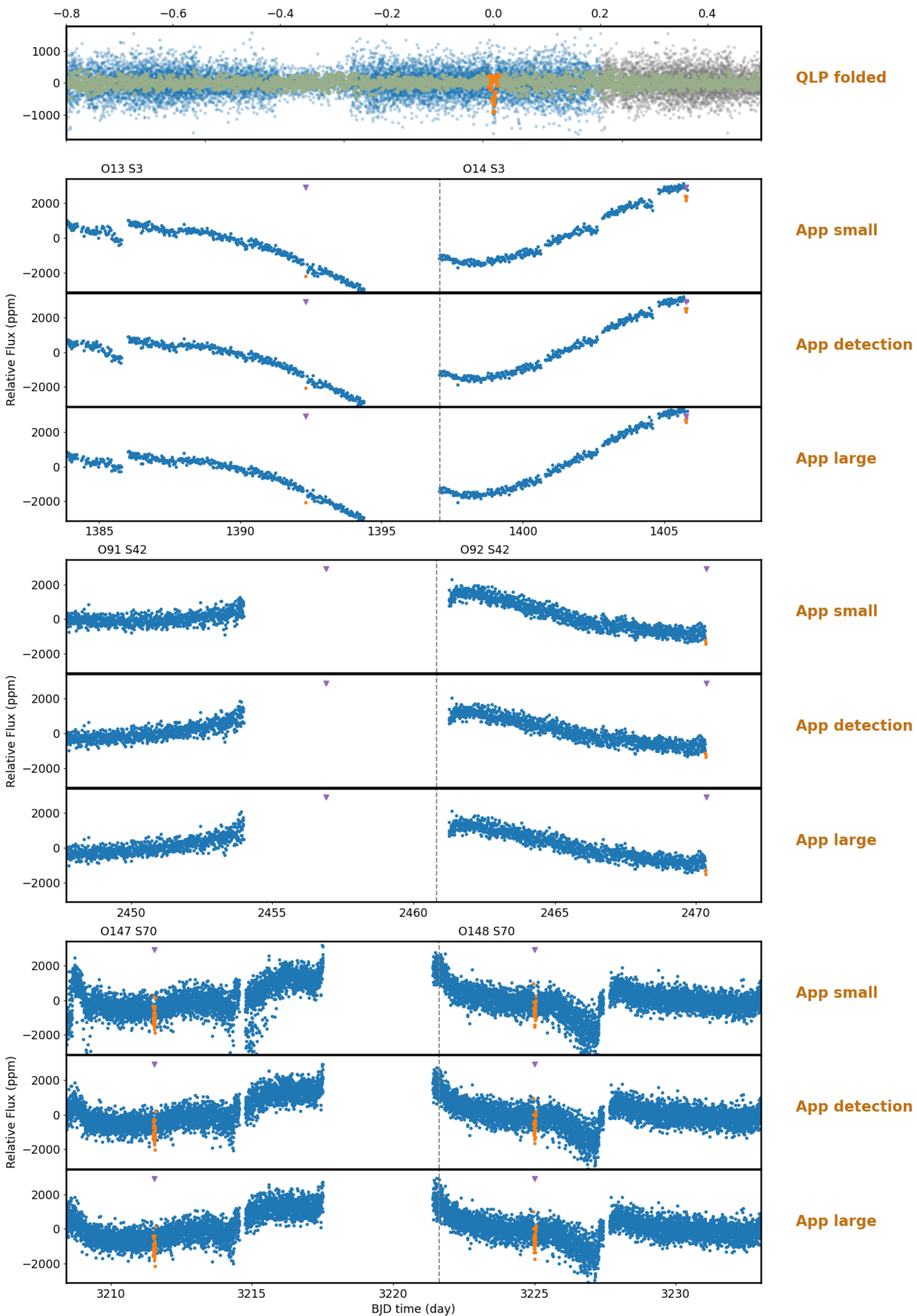
u1: 0.2258081 [0.0606295, 0.4081939]

u2: 0.2208367 [0.0674066, 0.3988444]

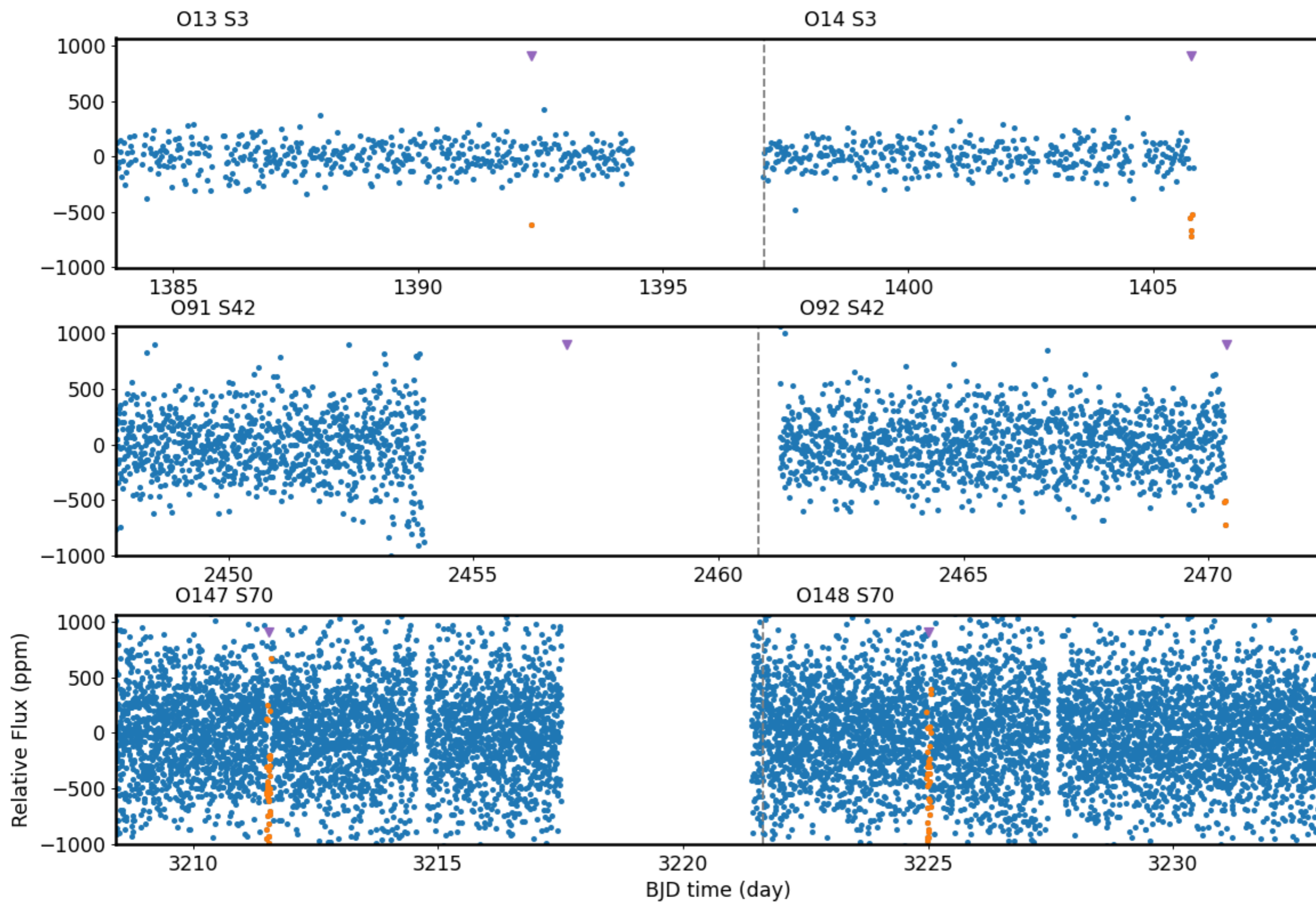
period: 13.4758230 [13.4757936, 13.4758516]

rhostarobs: 61.6 [33.9, 94.4]

37749396.01: Detailed raw light curve information



37749396.01: Detailed raw light curve information



37749396.01: BLS Analysis

37749396: BLS Data:

depth: 0.0007
ootmag: 8.5
period: 13.476
points_in_transit: 75
points_post_transit: 72
points_pre_transit: 85
qingress: 0.098
qtran: 0.006
rednoise: 4.1e-05
sde: 8.3
signal_to_noise: 39.4
signal_to_pinknoise: 15.97
sr: 4.3e-05
transit_center: 1392.2843
transits: 5
whitenoise: 0.00032

