

TCE: *tess*169249234.01

$P = 7.186$ Day

$T_0 = 1550.158$ BJD

$R_p \sim 14.131$

$R_p/R_{star} \sim 0.109$

$T_{dur}/P \sim 0.026$

$T_{dur} \sim 4.458$ hr

$T_{12}/T_{14} \sim 0.190$

$SN_{BLS} \sim 14.8$

$SNR \sim 31.7$

Star: TIC169249234

$R_* \sim 1.2R_{\odot}$

$M_* \sim 1.0M_{\odot}$

$T_{eff} \sim 5758K$

$logg \sim 4.30$

RA = 160.887

DEC = -1.913

$T_{mag} = 12.2 (+0.1)$ $J - K = 0.36$

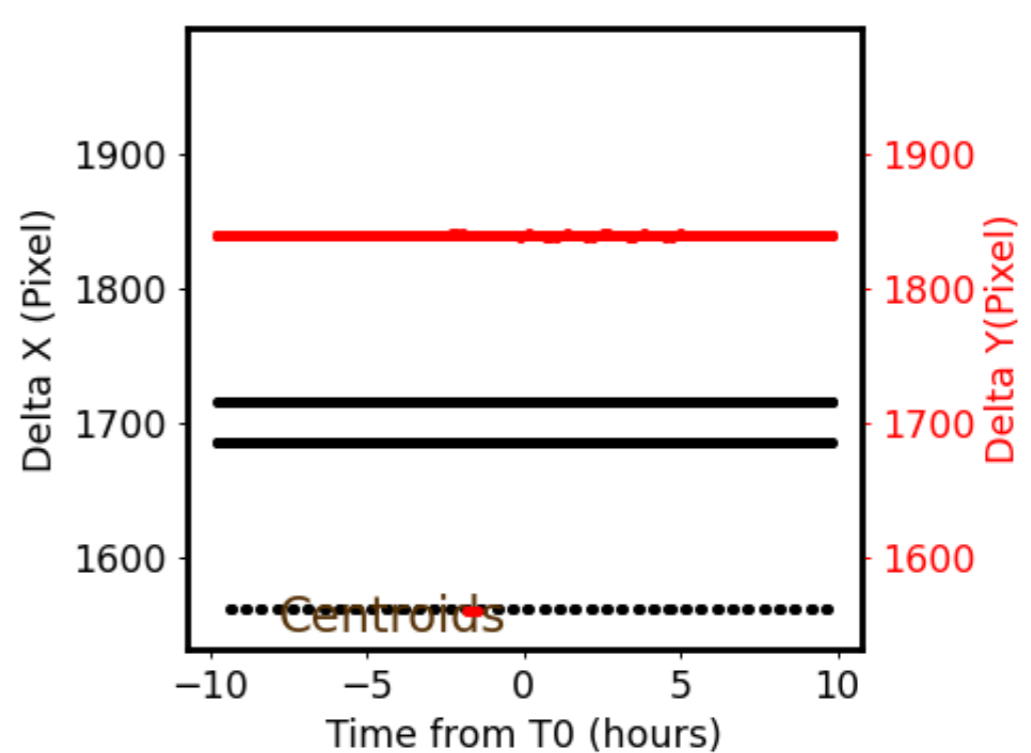
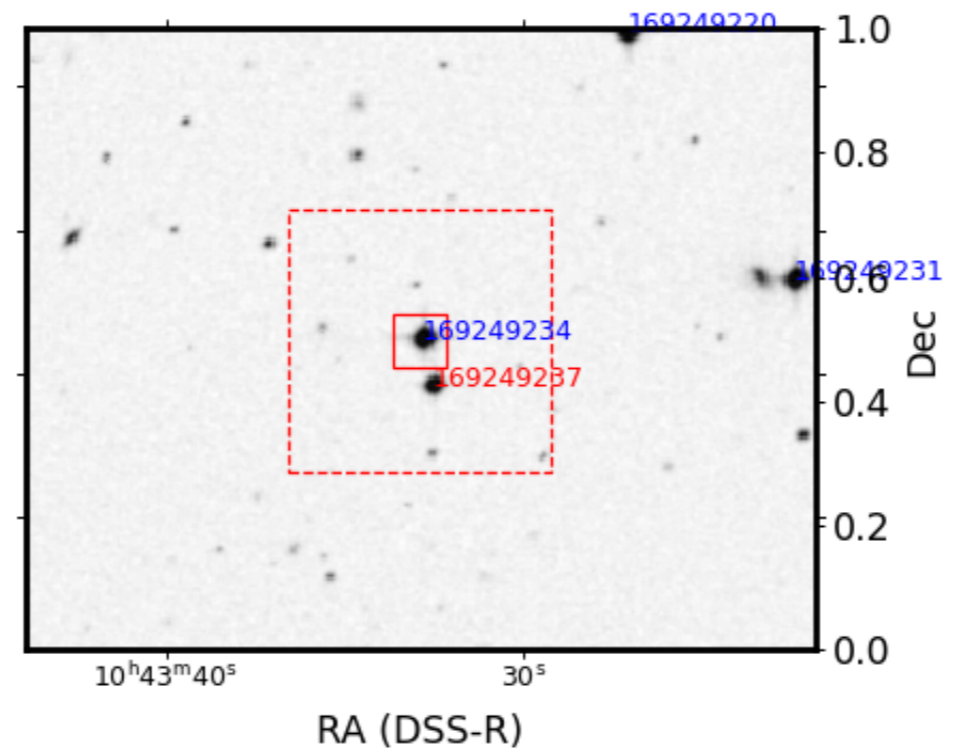
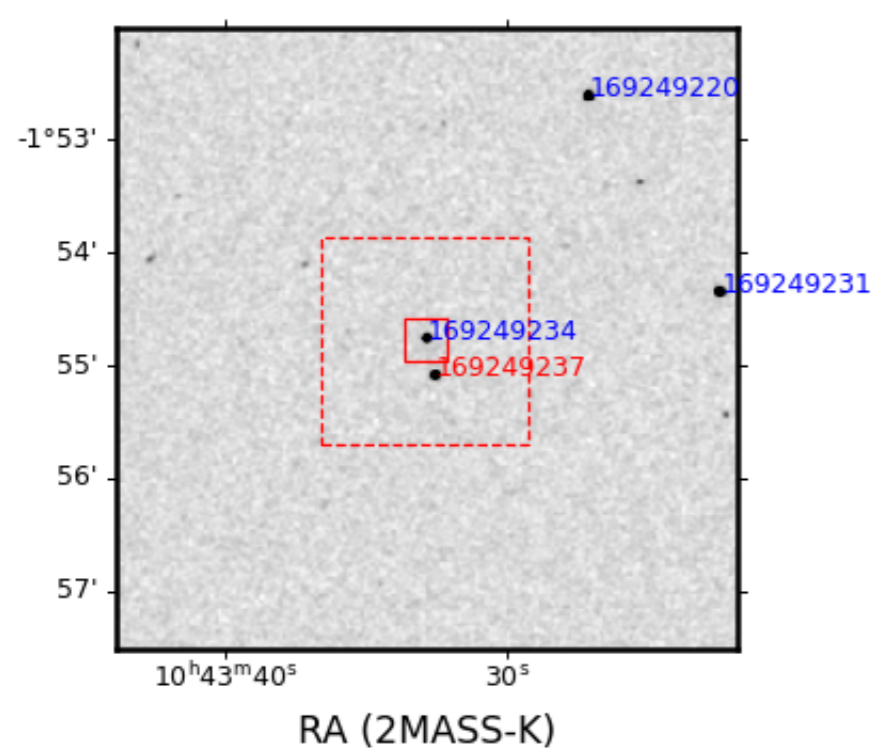
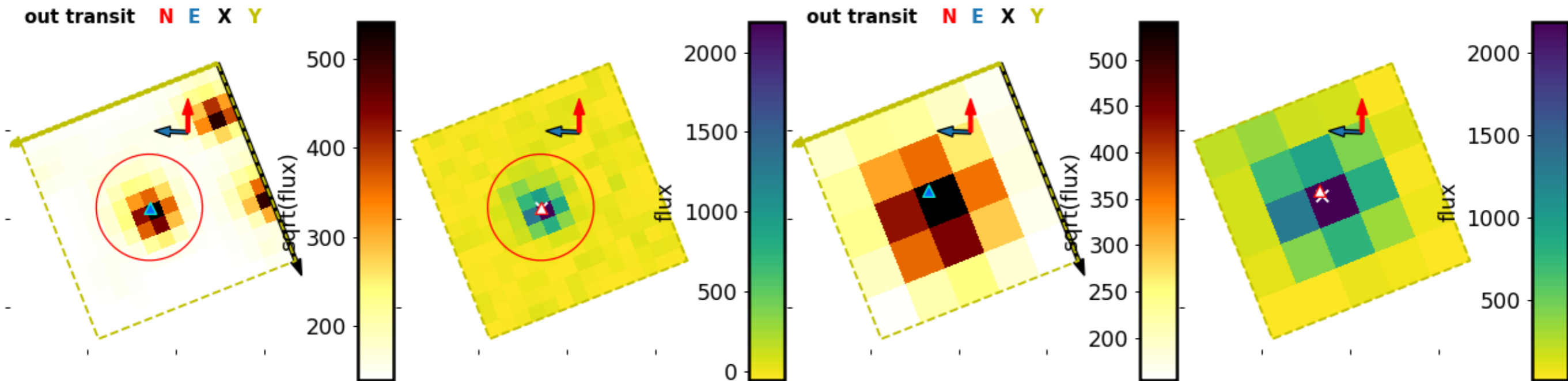
$gb - gr = nan$

$par = 2.3$

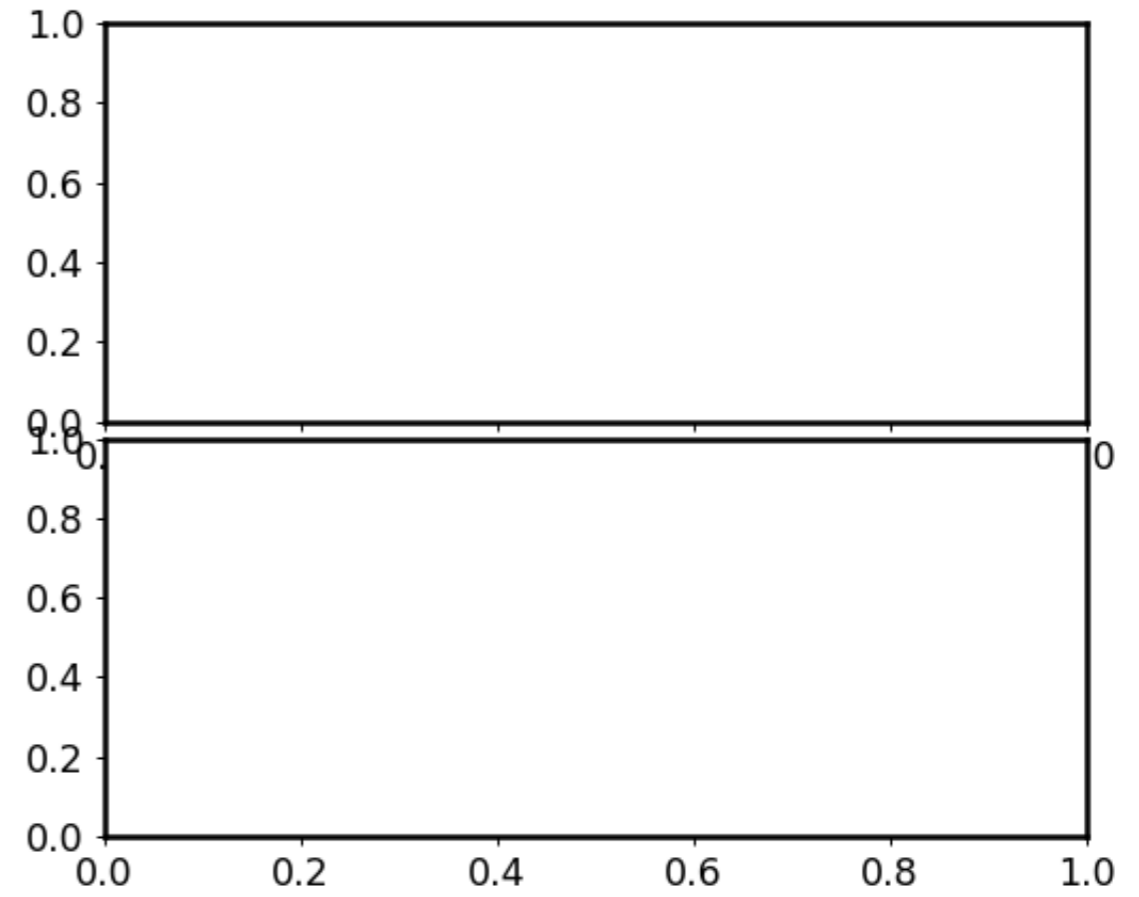
$pmra = 10.0$

$pmdec = 4.8$

169249234.01: Centroid Shift and Ephemeris Match (to most significant object)



169249234.01: Centroid Shift and Ephemeris Match (to most significant object)



Matched. tic:169249237 significance: 4.1, 2.9 sigma

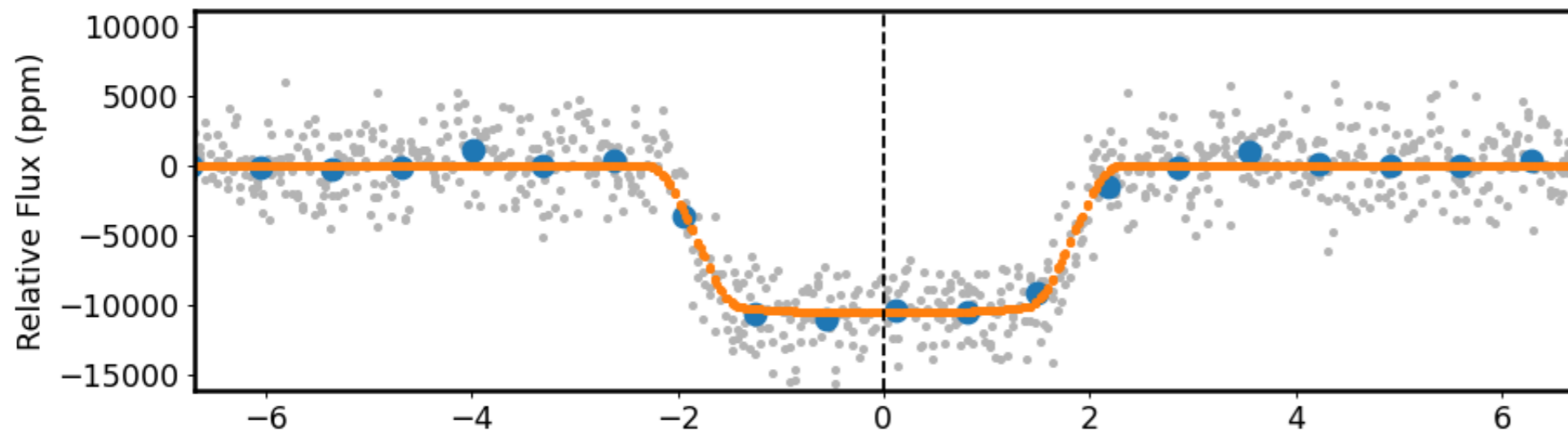
T: RA: 160.887 DEC: -1.913 Mag: 12.2 x: 1716.2 y: 1310.7

M: RA: 160.886 DEC: -1.918 Mag: 13.0 x: nan y: nan

Pt: 7.18587 day ; Pm : 7.18611 day; Pm/Pt : 1.00

ID matching result: None

169249234.01: Detailed transit fitting information



MCMC parameters

per: 7.1858129923245615

inc: 89.42801871800494

ecc: 0.0

w: 90

u: [0.053047597202784486, 0.10267692008077844]

fp: None

t0: 2570.5454207 [2570.5447639, 2570.5461509]

b: 0.1469402 [0.0453190, 0.3065330]

a: 14.7193478 [14.2326369, 14.9768014]

rp: 0.1007736 [0.0997212, 0.1017666]

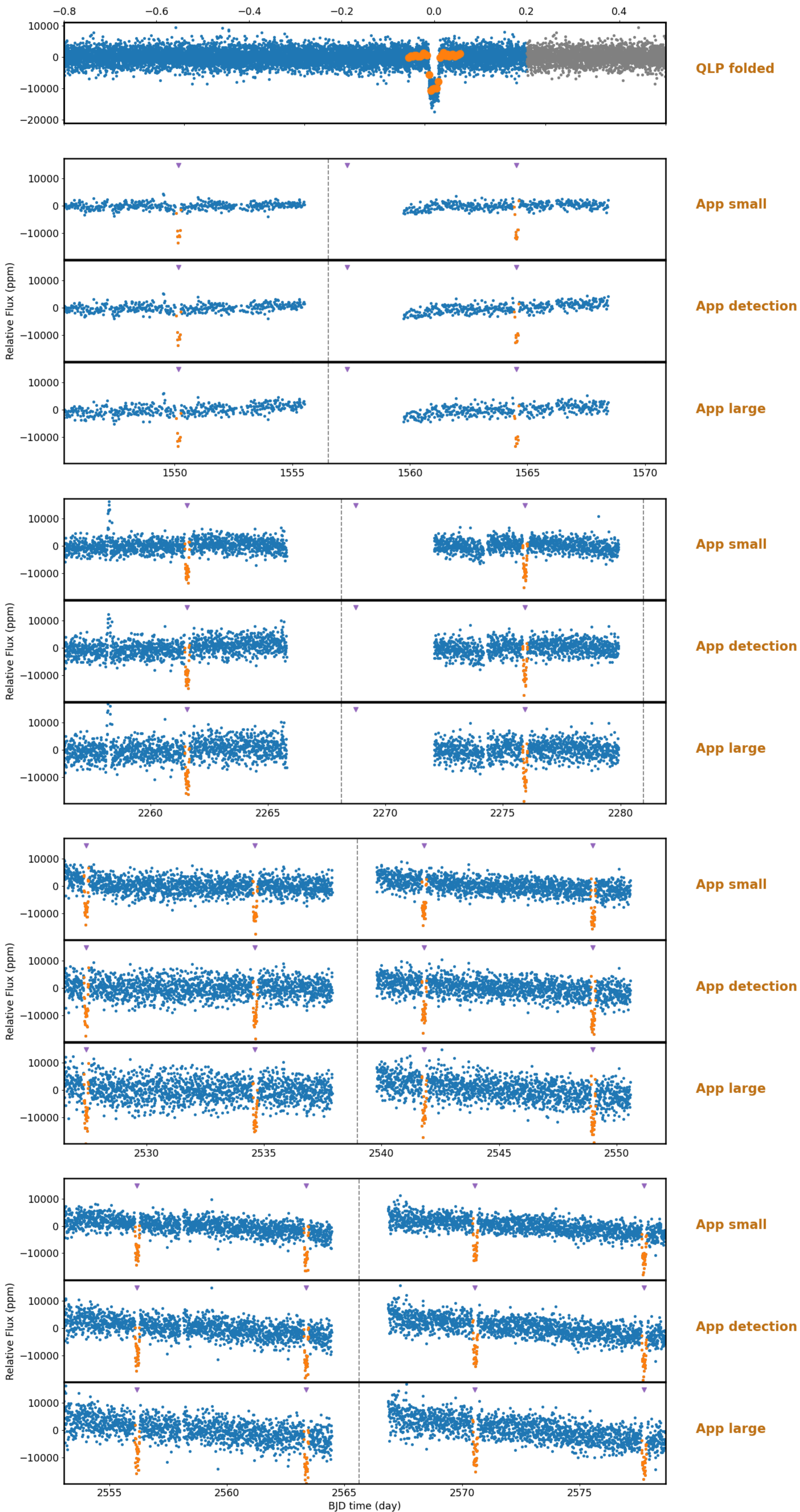
u1: 0.0530476 [0.0142232, 0.1175860]

u2: 0.1026769 [0.0261727, 0.2407621]

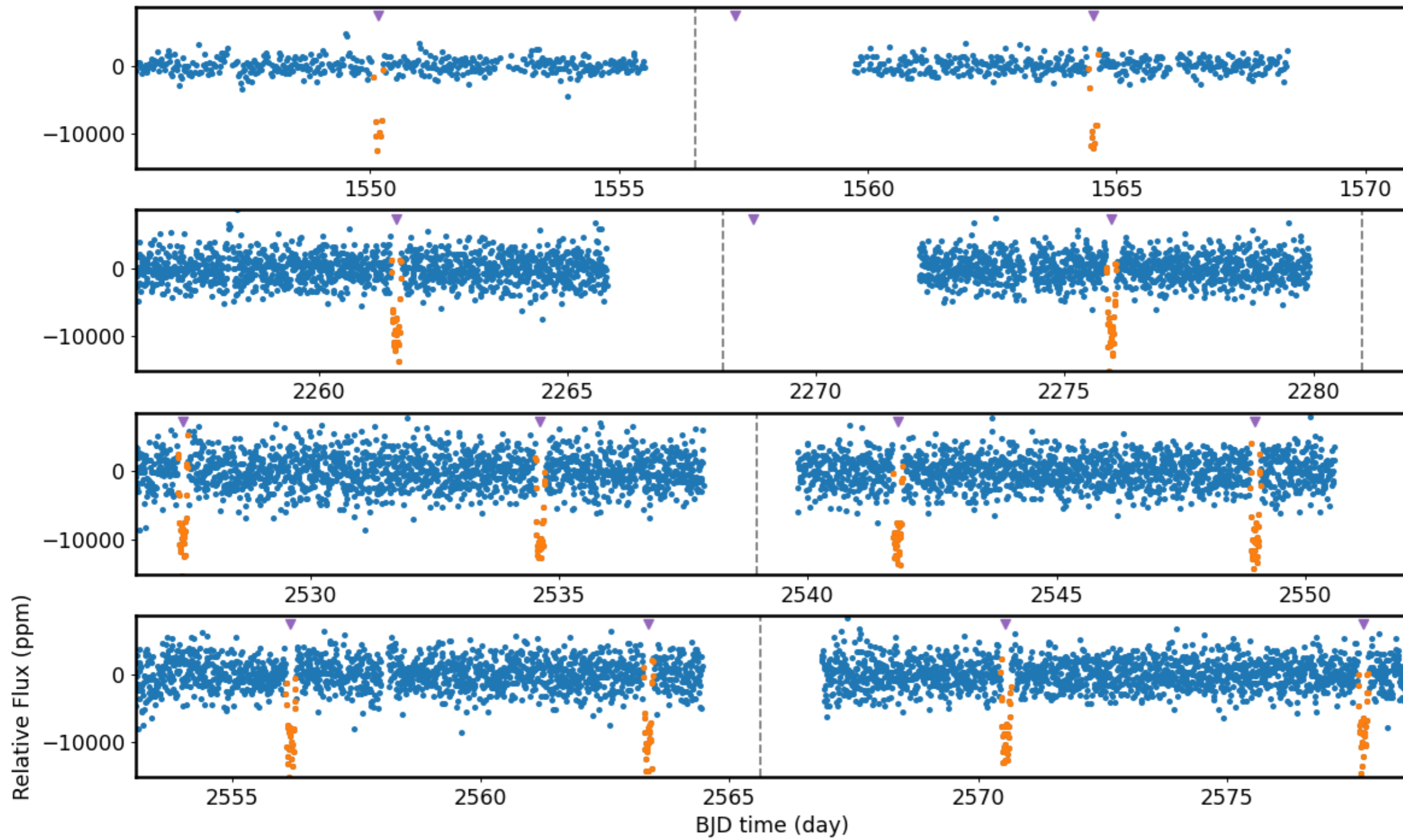
period: 7.1858130 [7.1858017, 7.1858242]

rhostarobs: 4.9 [4.43, 5.16]

169249234.01: Detailed raw light curve information



169249234.01: Detailed raw light curve information



169249234.01: Detailed transit information

average of neighboring 21 transits

binned flux of all data

