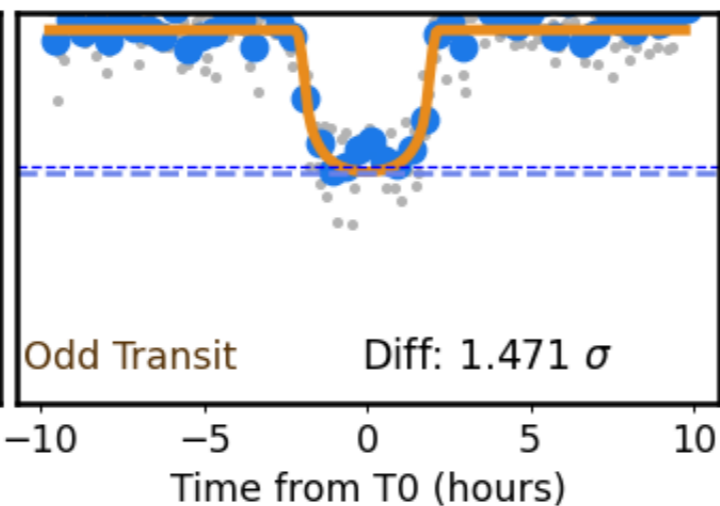
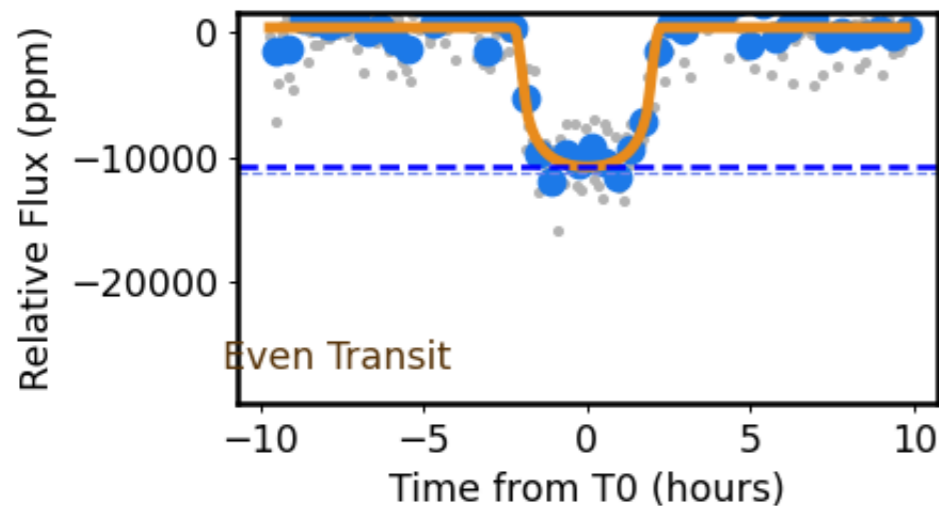
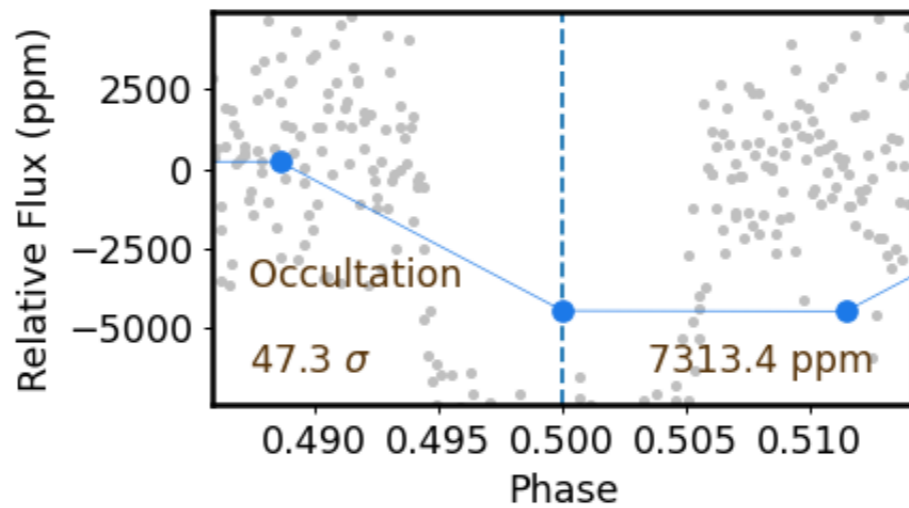
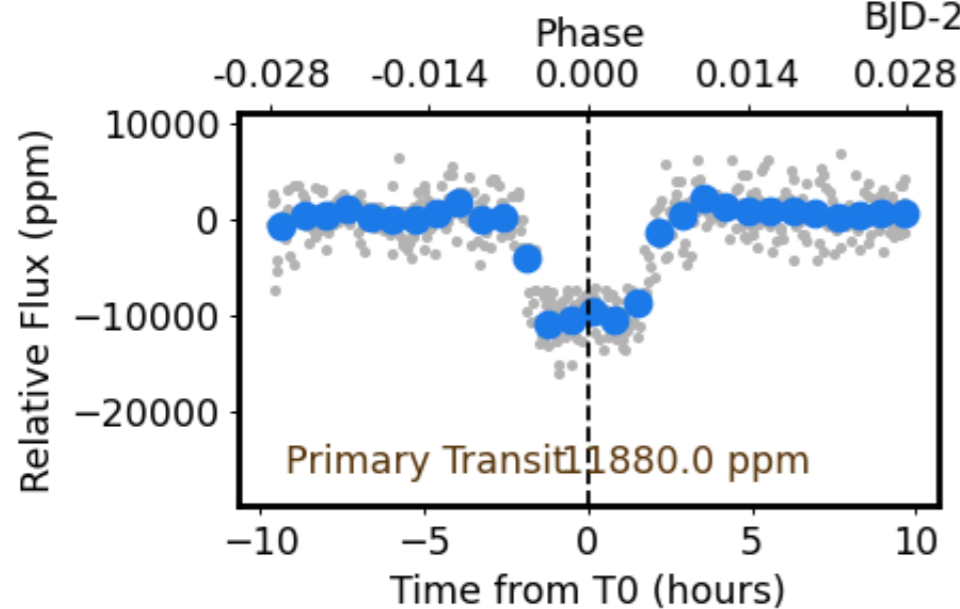
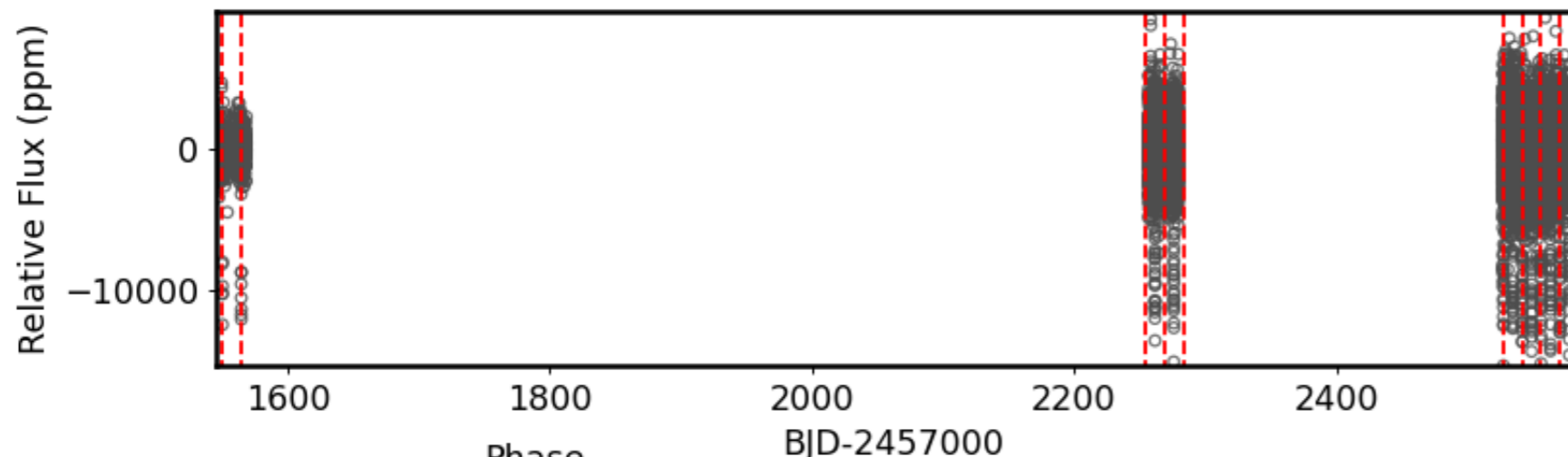


### Detrended Full LC



TCE: *tess169249234.01*

$P = 14.372$  Day

$T_0 = 1550.158$  BJD

$R_p \sim 14.131$

$R_p/R_{star} \sim 0.109$

$T_{dur}/P \sim 0.013$

$T_{dur} \sim 4.432$  hr

$T_{12}/T_{14} \sim 0.190$

$SN_{BLS} \sim 14.8$       $SNR \sim 31.7$

**Star: TIC169249234**

$R_* \sim 1.2R_{\odot}$       $M_* \sim 1.0M_{\odot}$

$T_{eff} \sim 5758K$       $logg \sim 4.30$

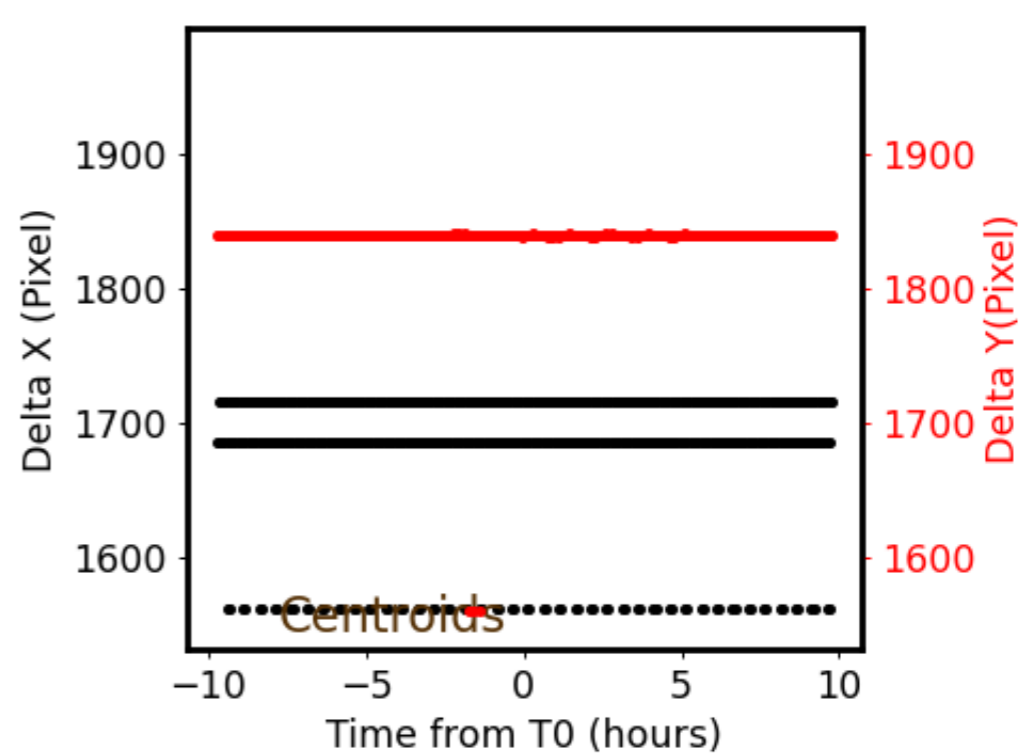
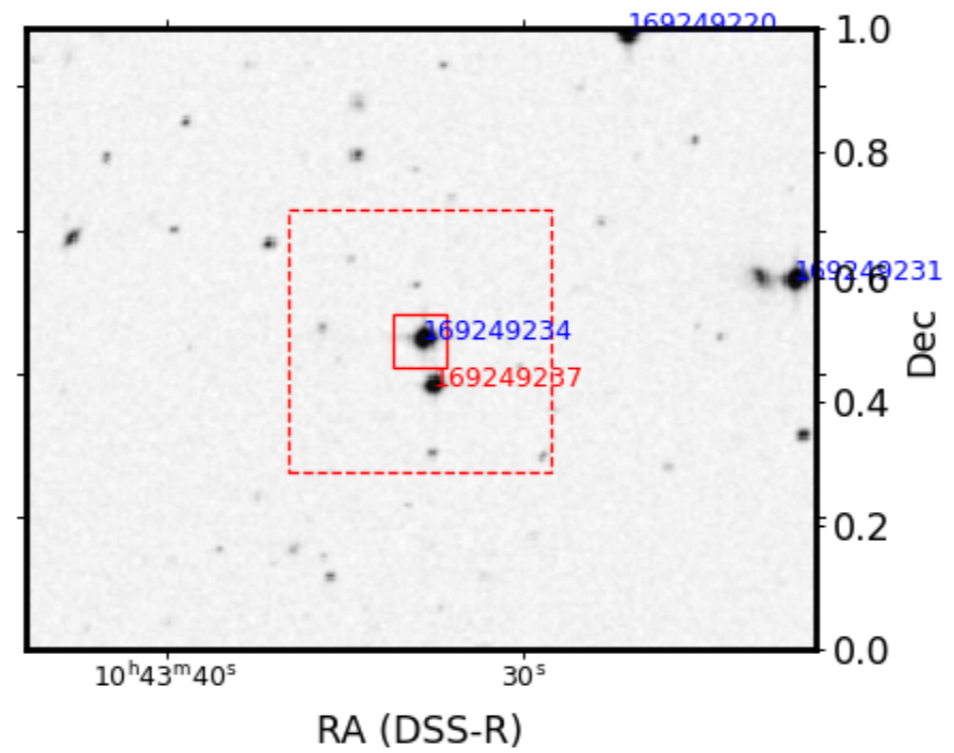
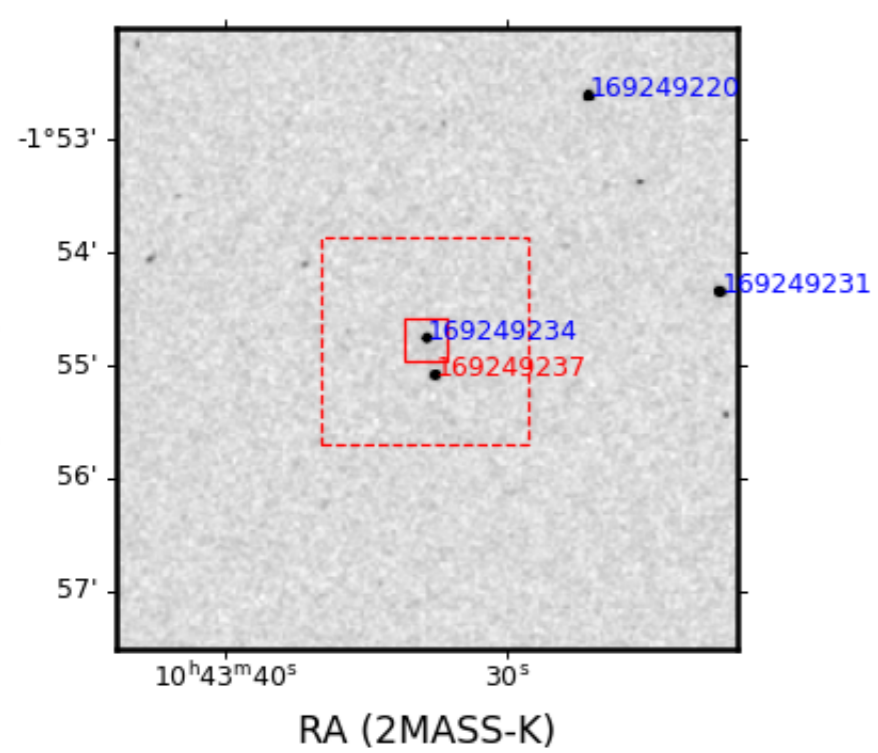
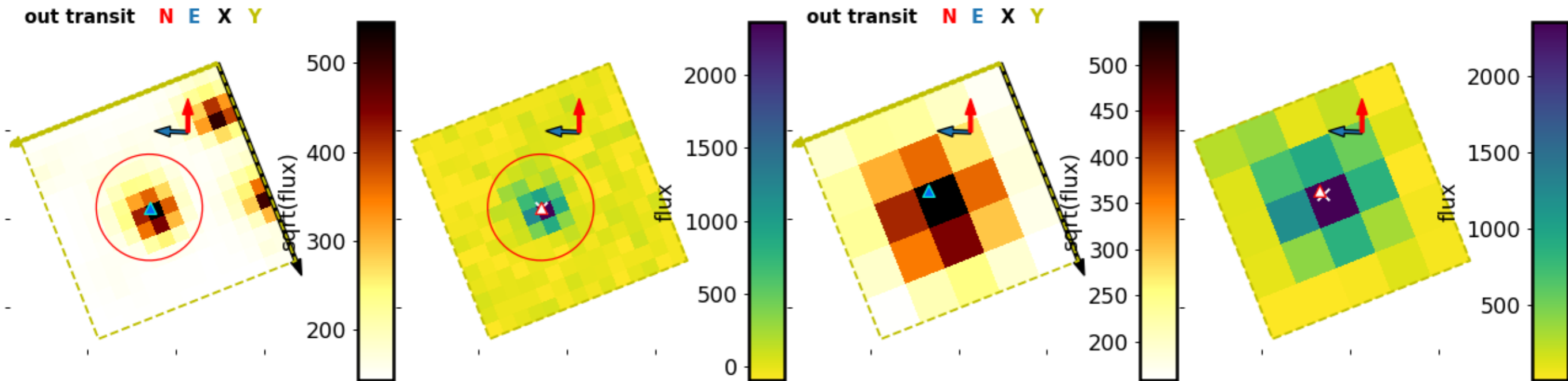
RA = 160.887     DEC = -1.913

TMag = 12.2      $J - K = 0.36$

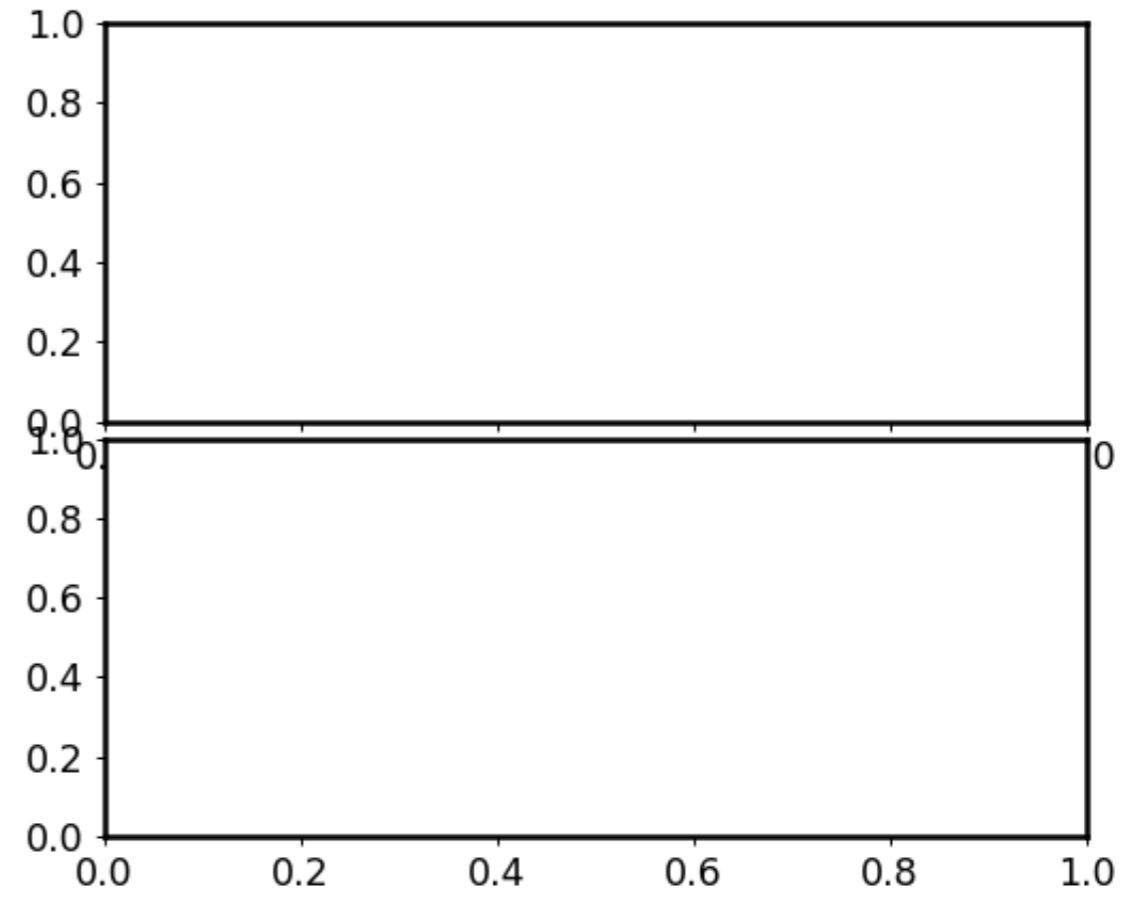
$gb - gr = nan$       $par = 2.3$

$pmra = 10.0$       $pmdec = 4.8$

# 169249234.01: Centroid Shift and Ephemeris Match (to most significant object)



# 169249234.01: Centroid Shift and Ephemeris Match (to most significant object)



Matched. tic:169249237 significance: 4.0, 2.9 sigma

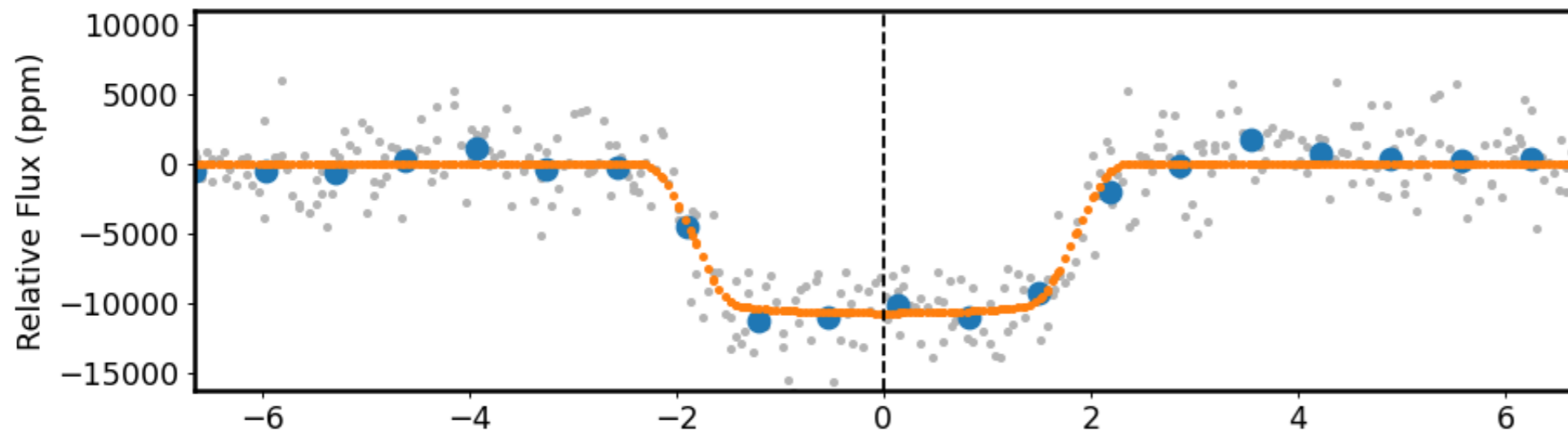
T: RA: 160.887 DEC: -1.913 Mag: 12.2 x: 1716.2 y: 1310.7

M: RA: 160.886 DEC: -1.918 Mag: 13.0 x: nan y: nan

Pt: 14.37167 day ; Pm : 7.18611 day; Pm/Pt : 0.50

ID matching result: None

# 169249234.01: Detailed transit fitting information



## MCMC parameters

---

per: 14.371641326016382

inc: 89.58408117841273

ecc: 0.0

w: 90

u: [0.08309472537541356, 0.14075642669089564]

fp: None

t0: 2556.1741188 [2556.1731126, 2556.1752001]

b: 0.2084383 [0.0638927, 0.4086583]

a: 28.7141134 [26.7988279, 29.5285887]

rp: 0.1006988 [0.0991677, 0.1020296]

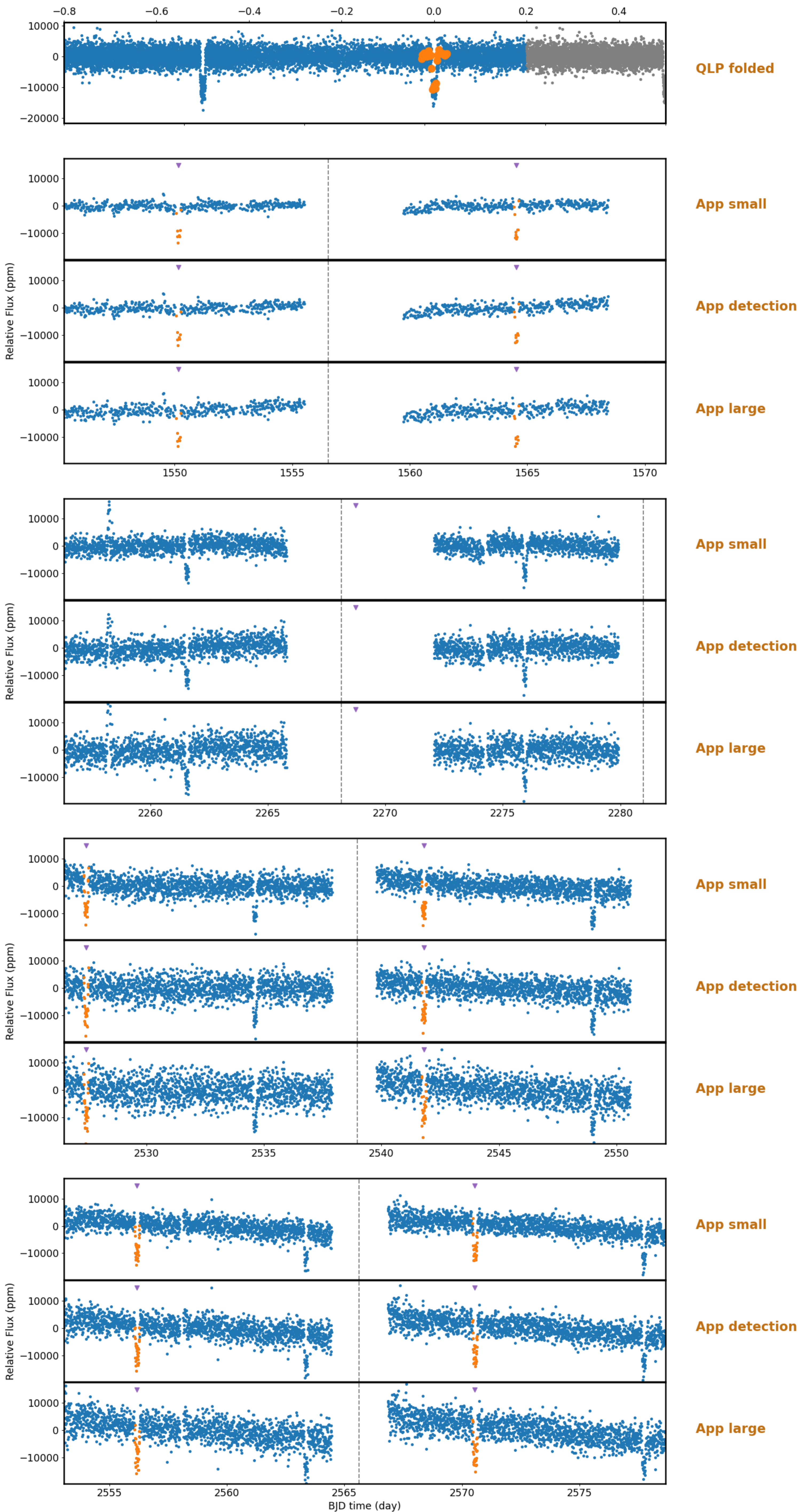
u1: 0.0830947 [0.0258468, 0.1798197]

u2: 0.1407564 [0.0367211, 0.3214434]

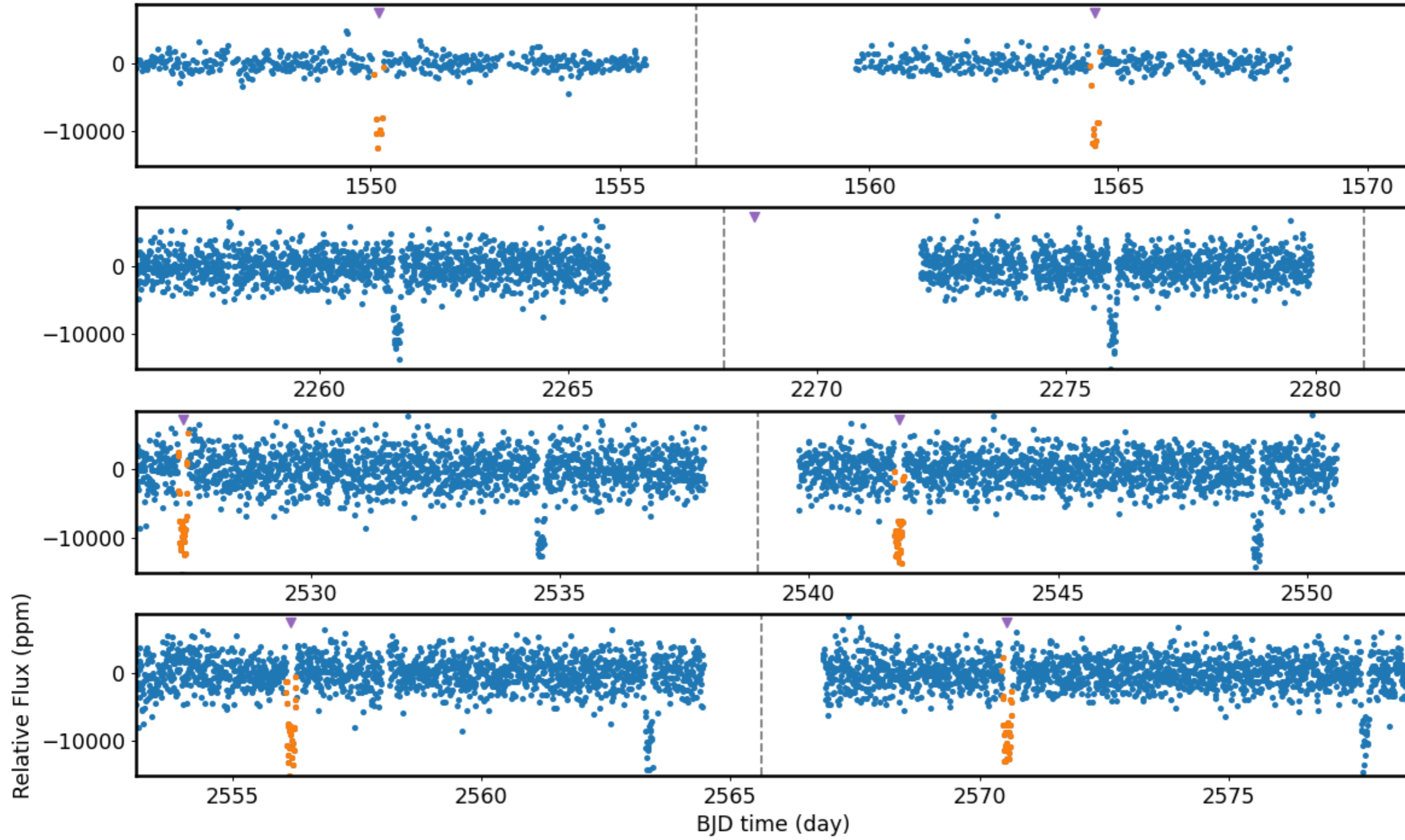
period: 14.3716413 [14.3716153, 14.3716693]

rhostarobs: 9.09 [7.39, 9.88]

169249234.01: Detailed raw light curve information



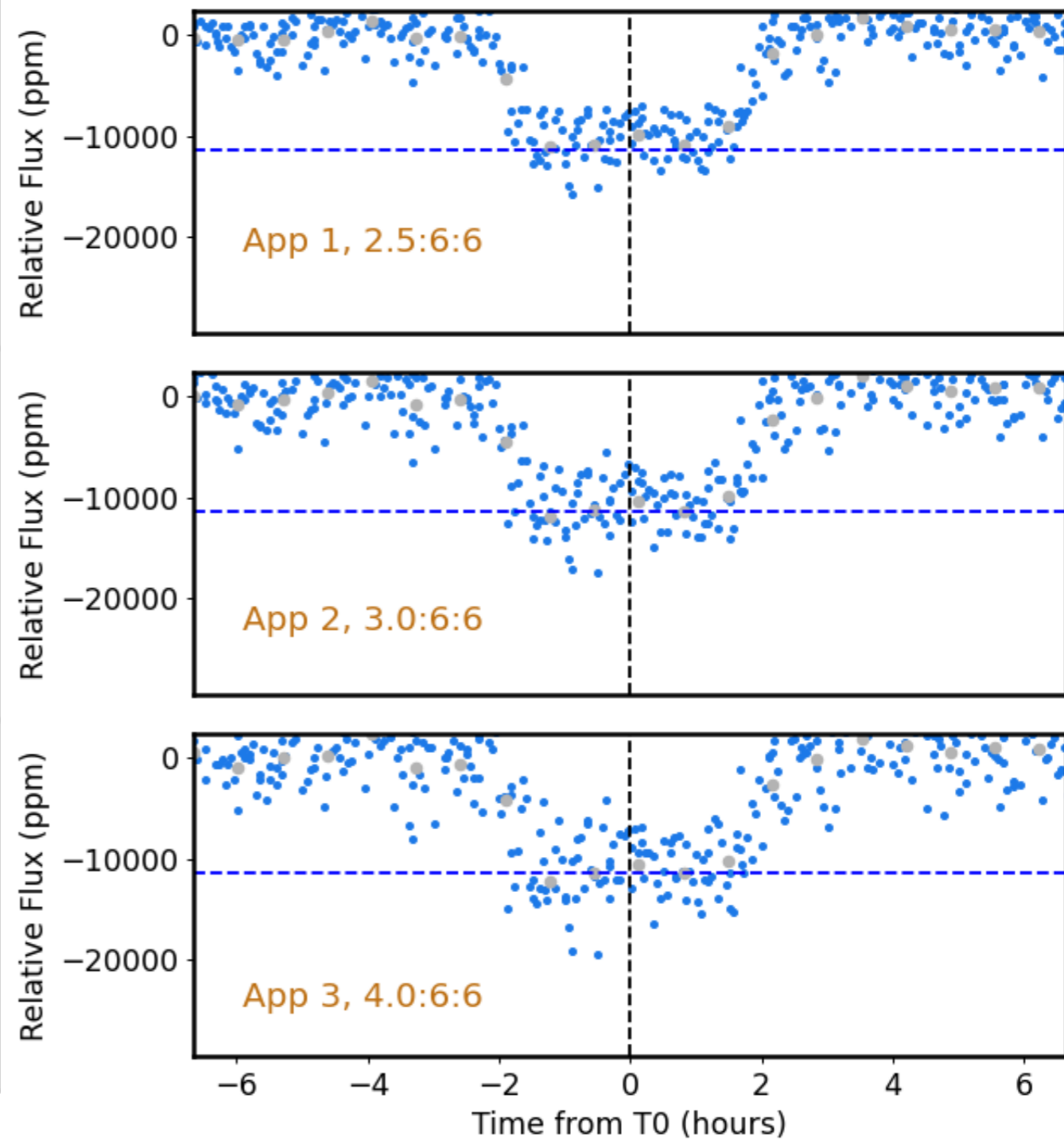
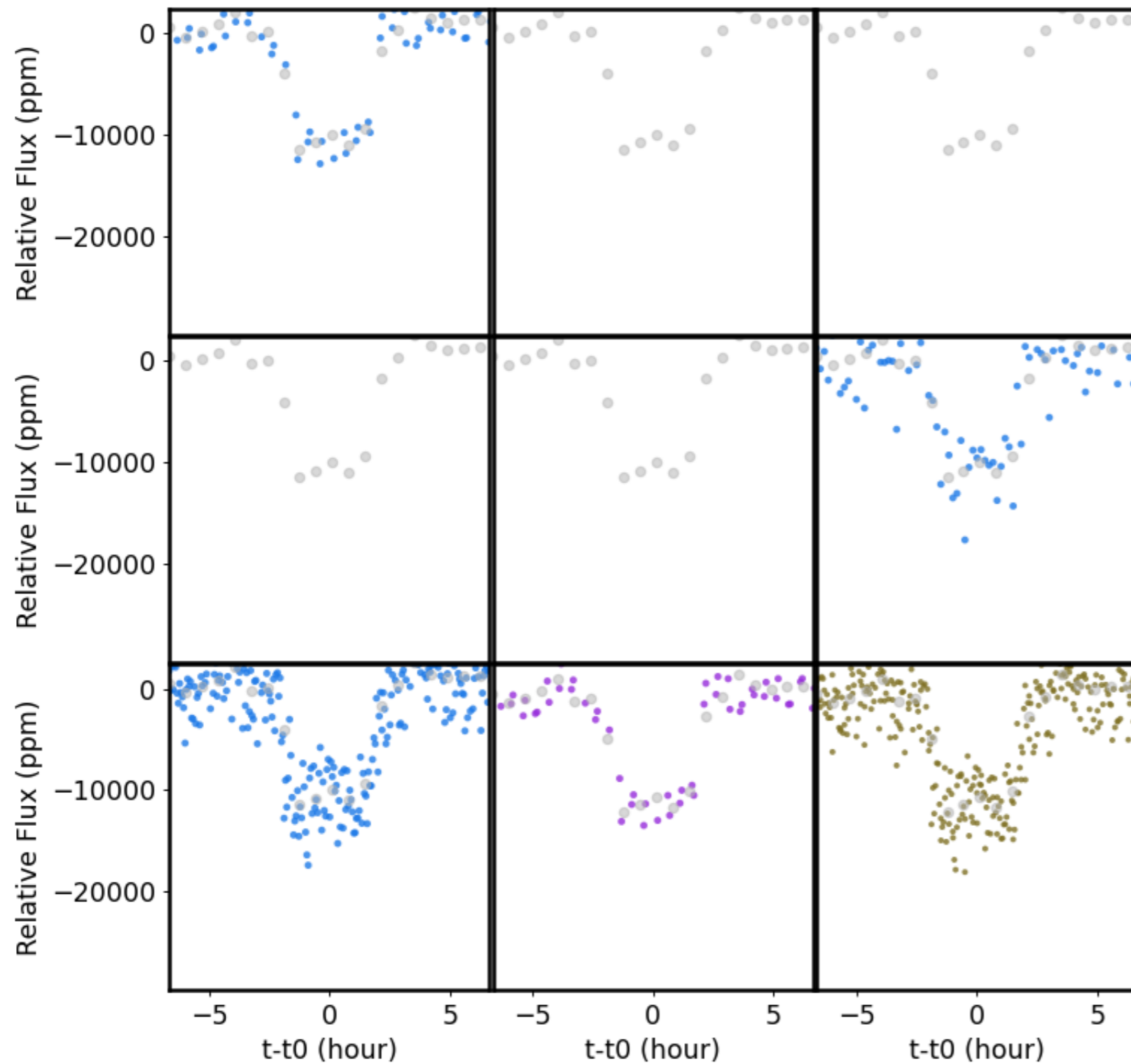
# 169249234.01: Detailed raw light curve information



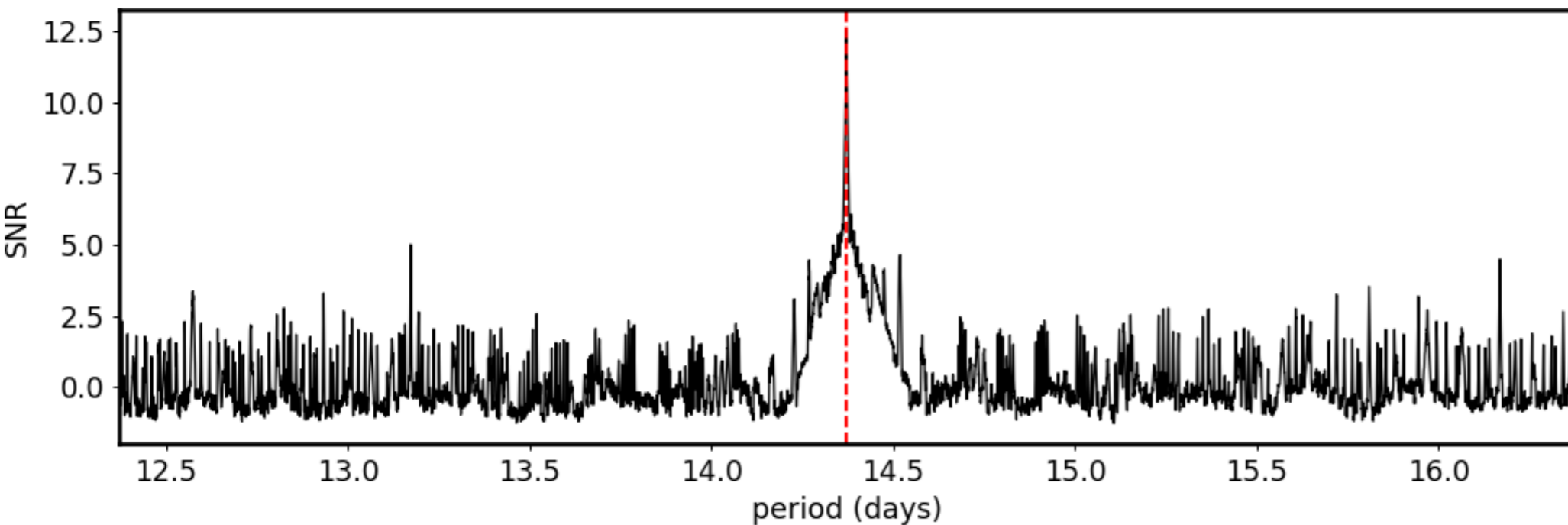
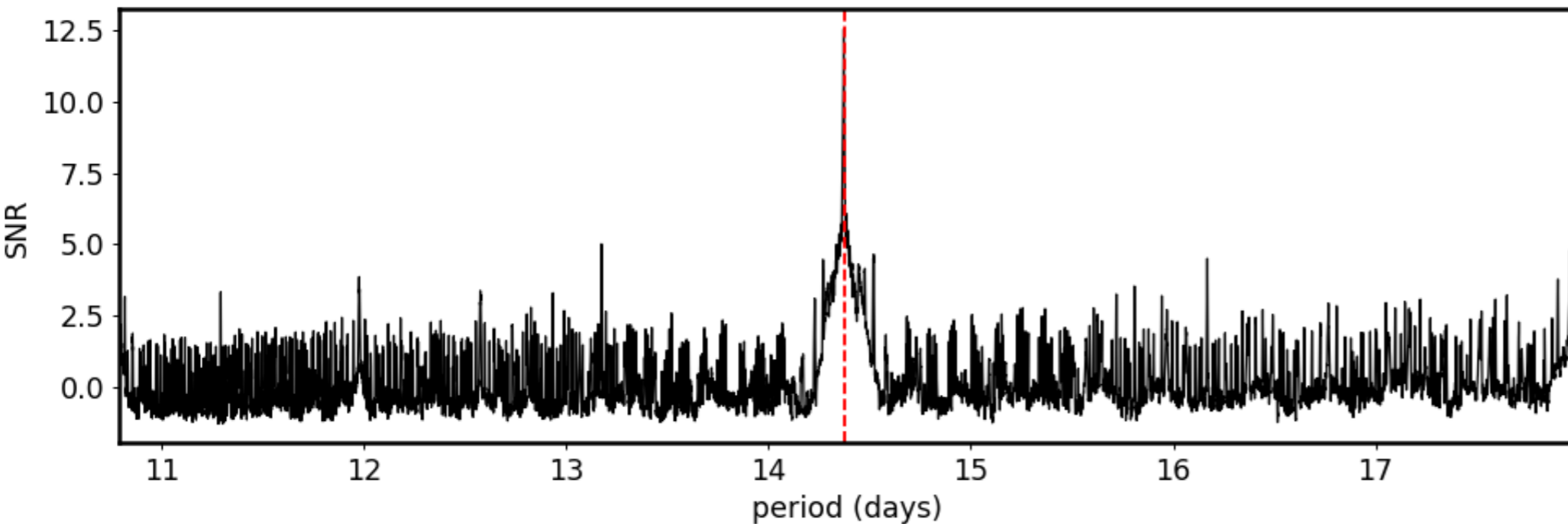
# 169249234.01: Detailed transit information

average of neighboring 11 transits

binned flux of all data



# 169249234.01: BLS Analysis



## 169249234: BLS Data:

Depth: 0.012  
Npointsaftertransit: 123  
Npointsbeforetransit: 121  
Npointsintransit: 123  
Ntransits: 6  
OOTmag: 12.2  
Period: 14.372  
Qingress: 0.190  
Qtran: 0.013  
Rednoise: 0.00075  
SDE: 11.3  
SN: 14.8  
SR: 0.0011  
SignaltoPinknoise: 31.65  
Tc: 1550.1575  
Whitenoise: 0.0024  
deltaChi2: -0.022  
fraconenight: 0.18  
i1: 0.33  
i2: 0.34