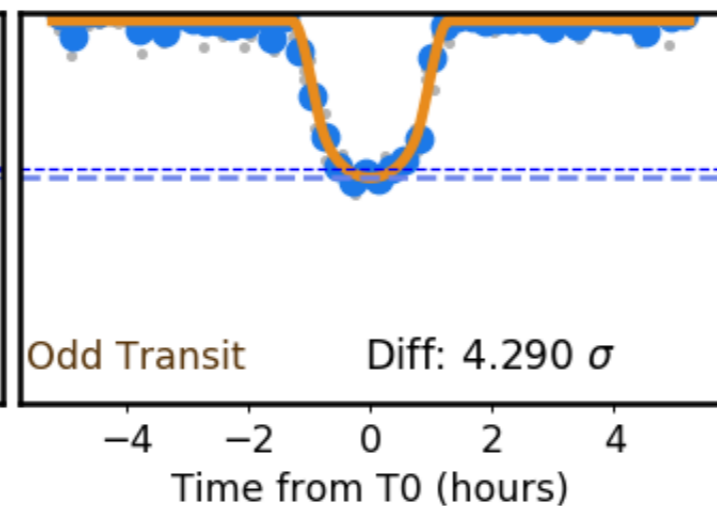
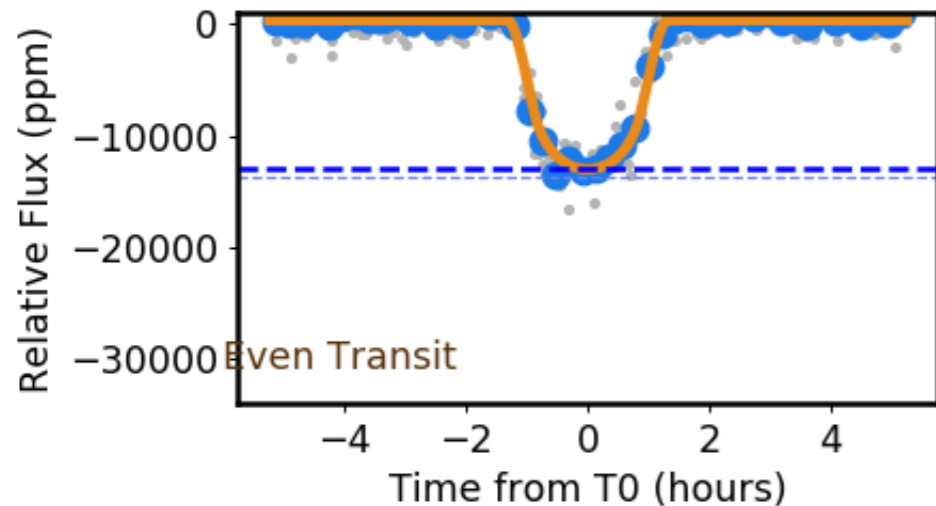
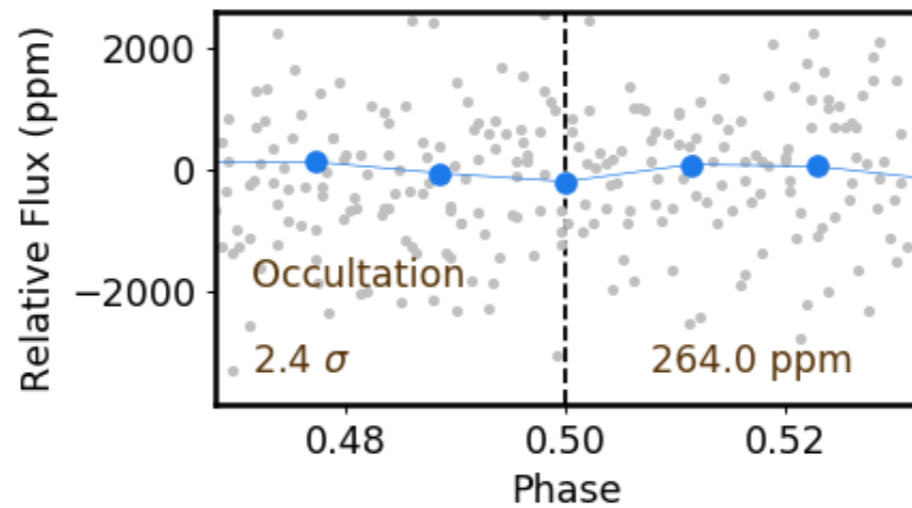
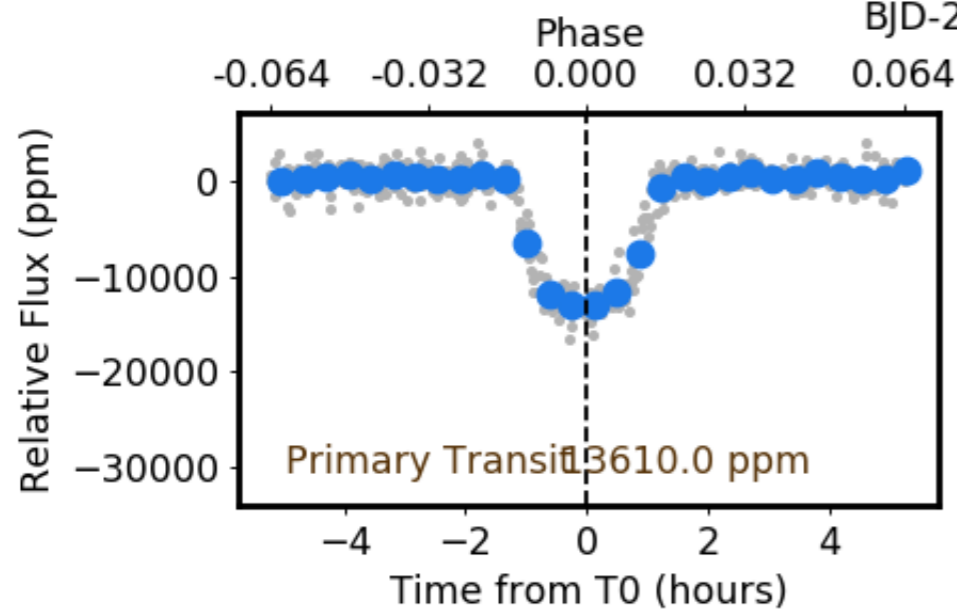
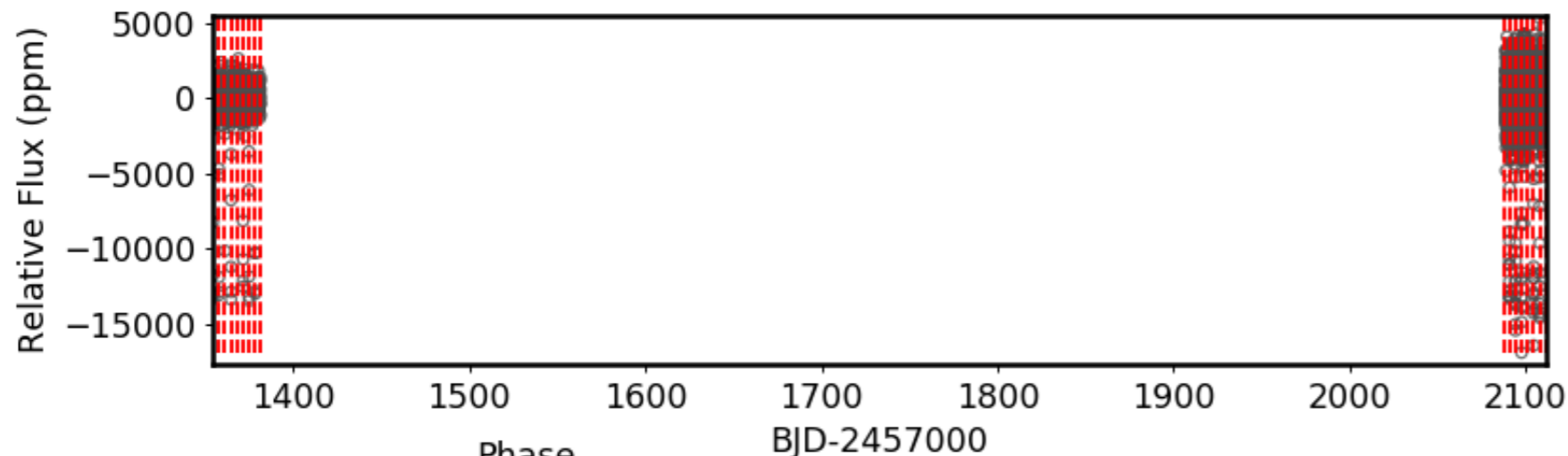


Detrended Full LC



TCE: *tess*160148385.01

$P = 3.425$ Day

$T_0 = 1354.317$ BJD

$R_p \sim 14.224$

$R_p/R_{star} \sim 0.117$

$T_{dur}/P \sim 0.029$

$T_{dur} \sim 2.384$ hr

$T_{12}/T_{14} \sim 0.208$

$SN_{BLS} \sim 55.6$ $SNR \sim 95.1$

Star: TIC160148385

$R_* \sim 1.1R_{\odot}$ $M_* \sim 1.0M_{\odot}$

$T_{eff} \sim 5560K$ $logg \sim 4.33$

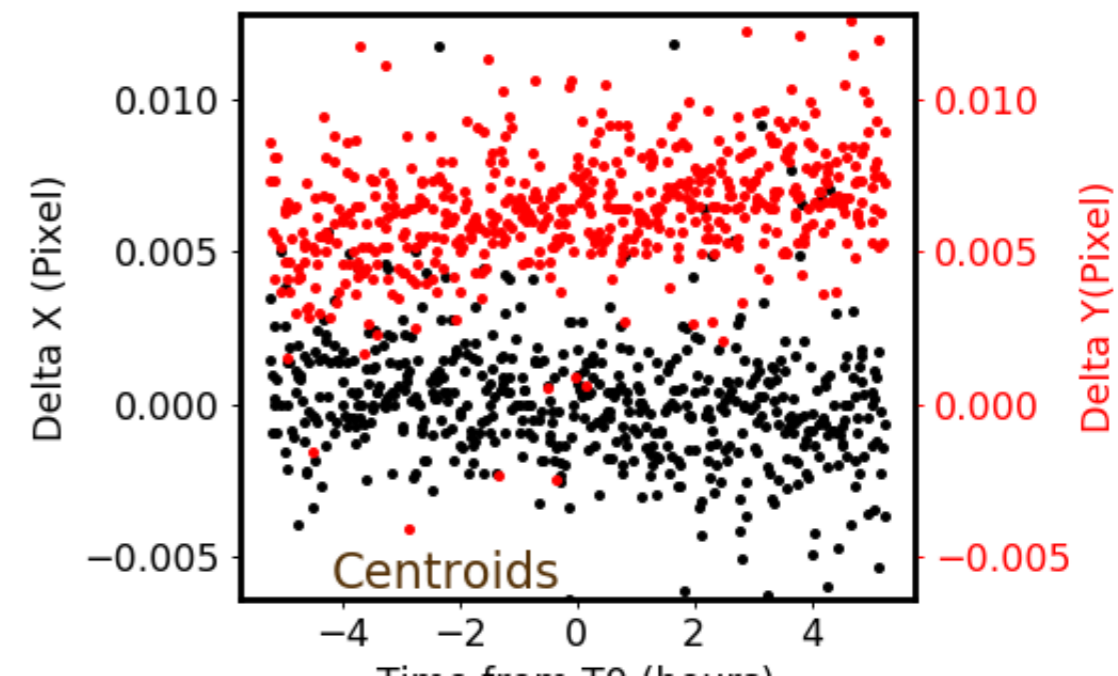
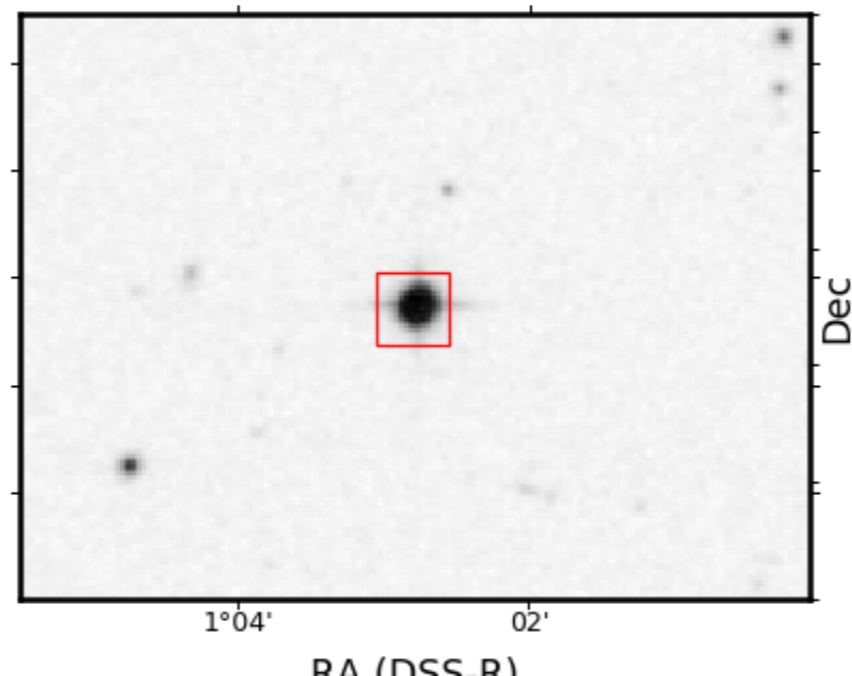
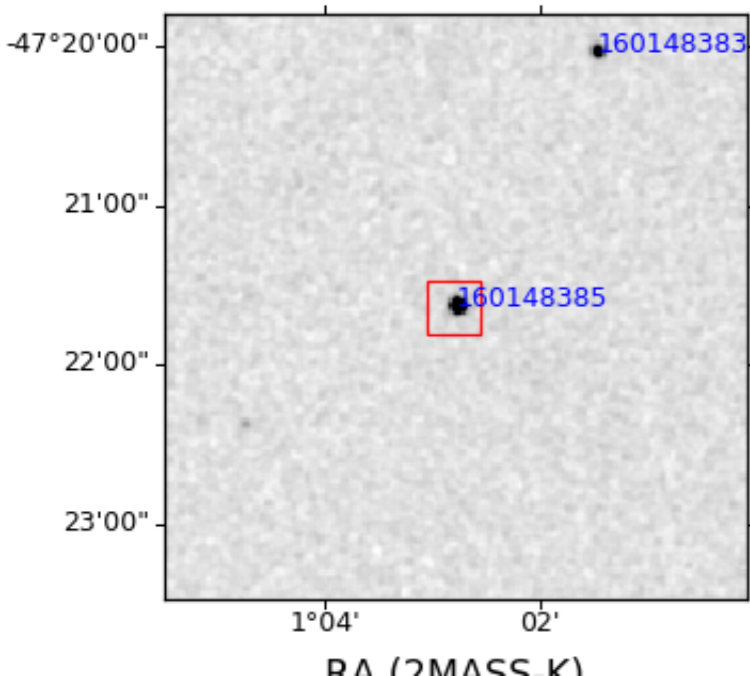
RA = 1.046 DEC = -47.361

TMag = 11.9 $J - K = 0.4$

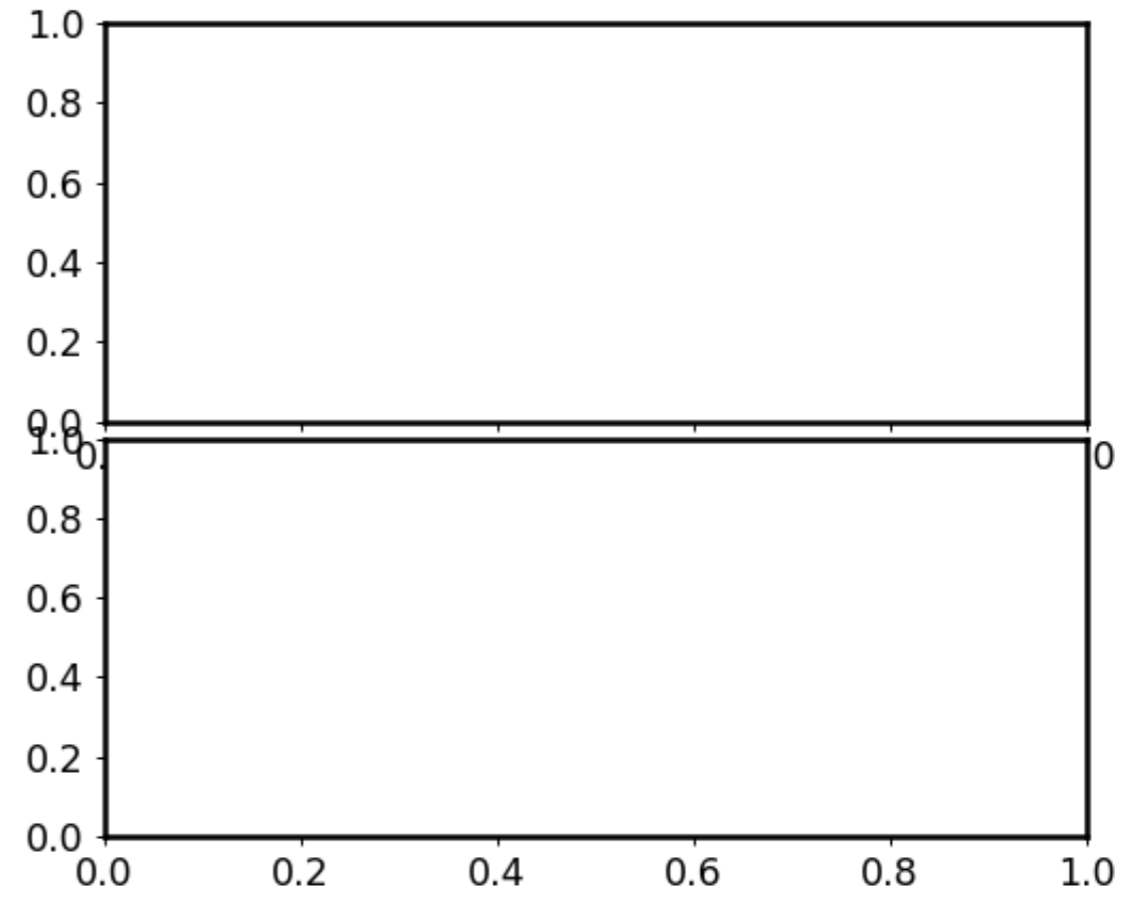
$gb - gr = nan$ $par = 2.8$

$pmra = 25.6$ $pmdec = 2.3$

160148385.01: Centroid Shift and Ephemeris Match (to most significant object)



160148385.01: Centroid Shift and Ephemeris Match (to most significant object)

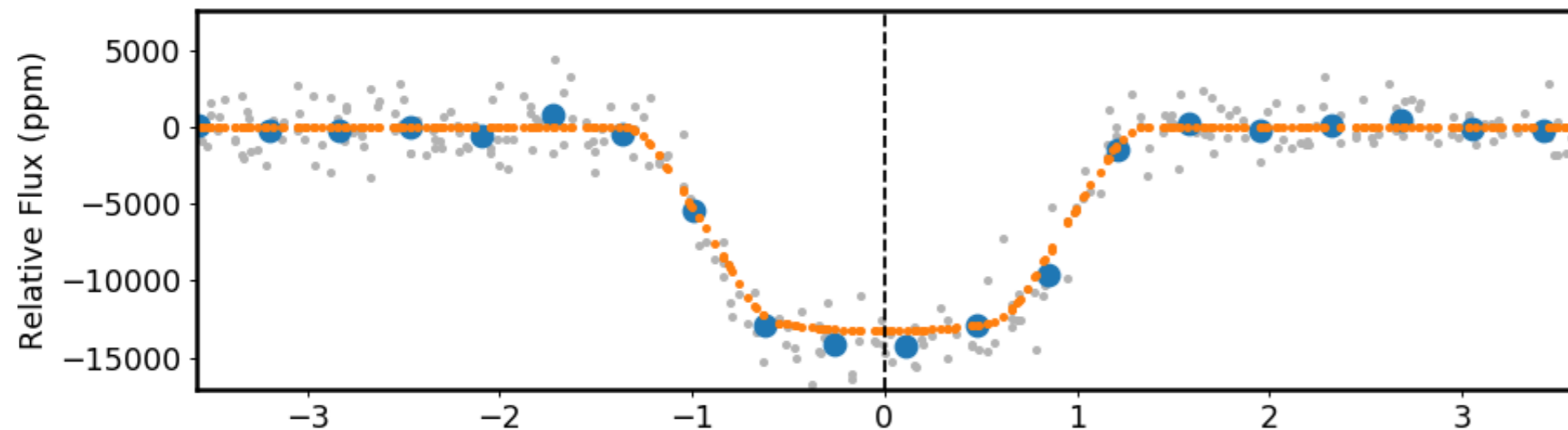


Epoch matching result: None

Near WASP-96, P = 3.425260, Epoch = 56258.062100

M: RA: 1.046, DEC: -47.361 Mag: 11.9 x:1014.8 y:1890.3

160148385.01: Detailed transit fitting information



MCMC parameters

fp: None

a: 12.72377 [11.15097, 13.48703]

b: 0.34576 [0.11669, 0.56974]

ecc: 0.0

rhostarobs: 13.9 [9.37, 16.6]

u1: 0.12296 [0.03924, 0.23602]

period: 3.42525 [3.42525, 3.42526]

per: 3.425254976427156

u2: 0.18687 [0.05595, 0.37204]

u: [0.12296364889110298, 0.18687294649614358]

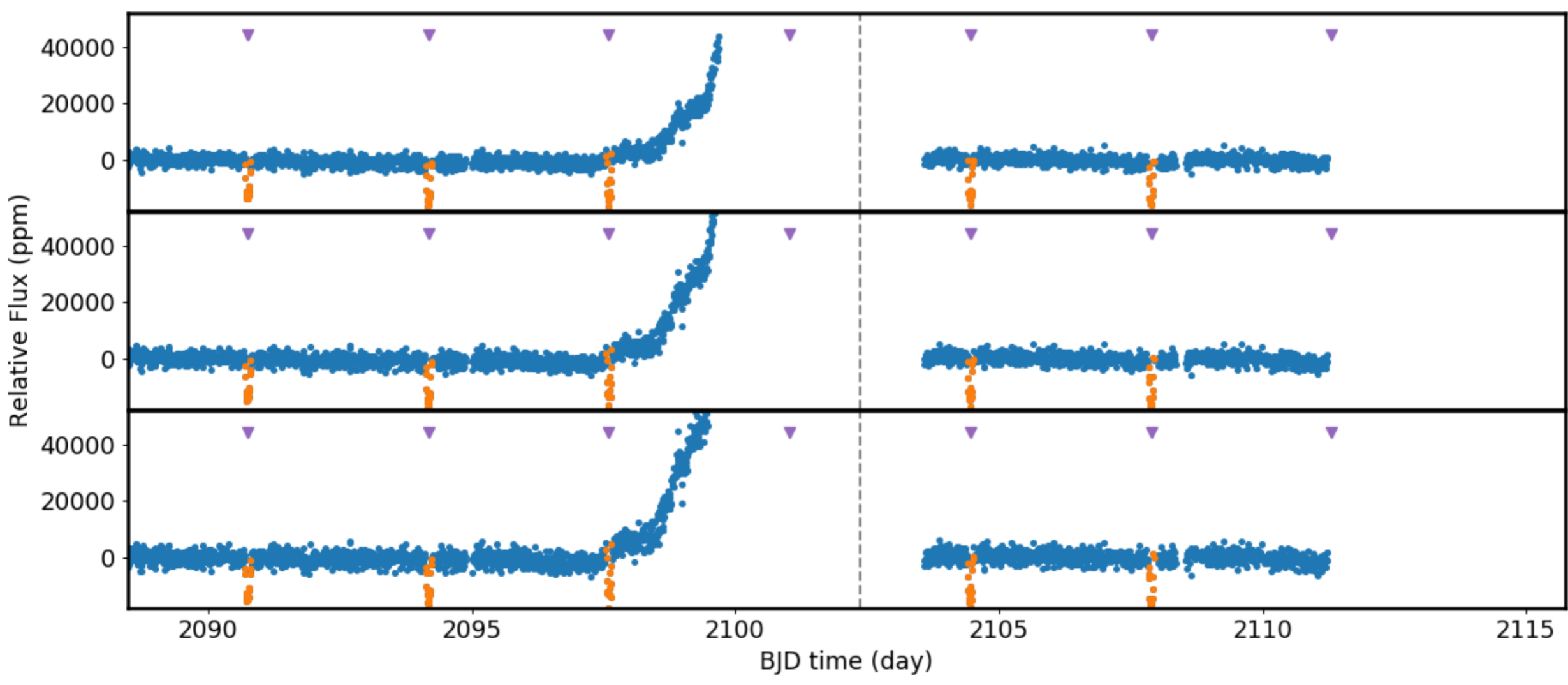
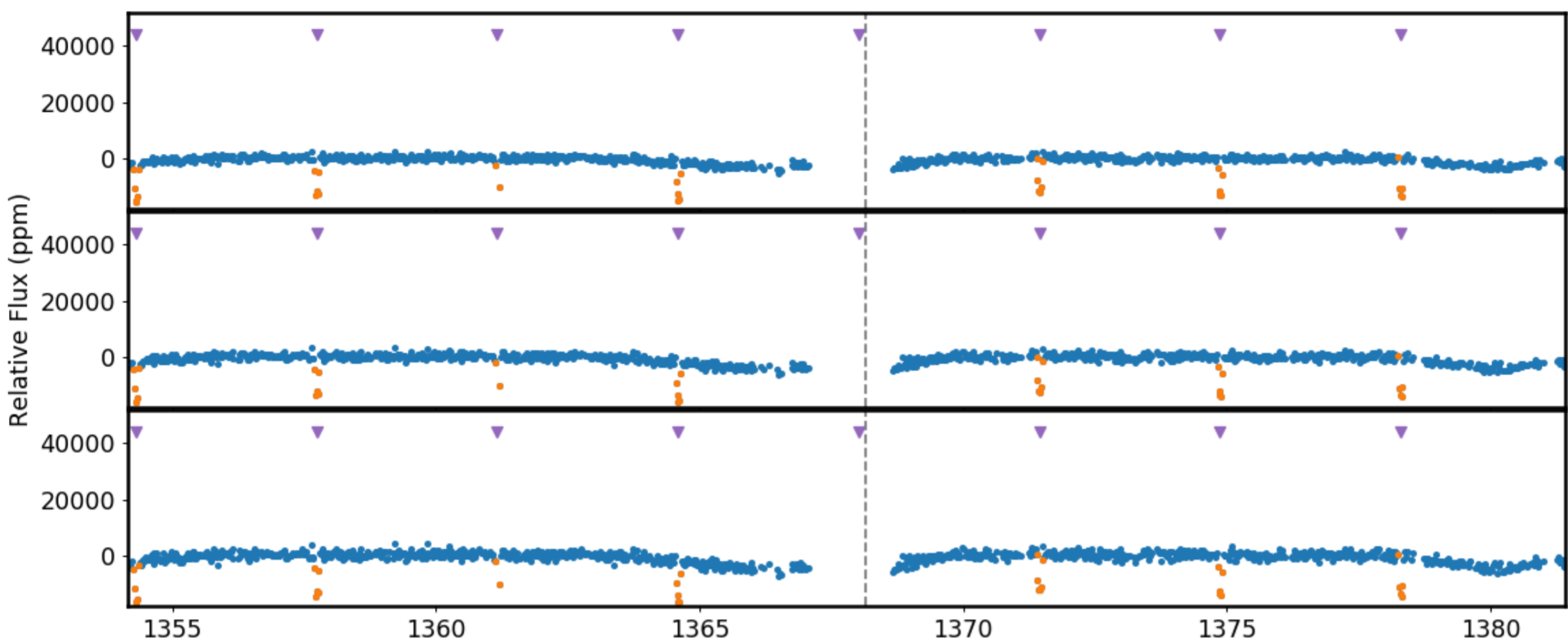
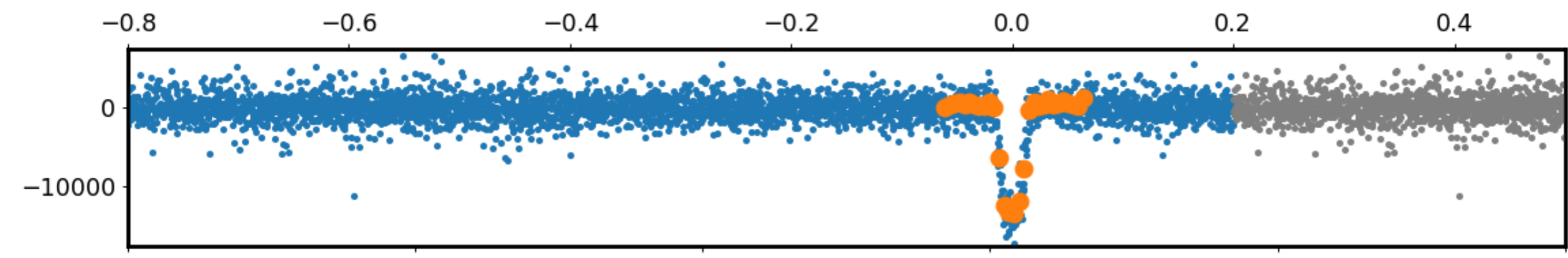
t0: 2107.87603 [2107.87560, 2107.87646]

w: 90

rp: 0.11146 [0.10956, 0.11310]

inc: 88.44281689911244

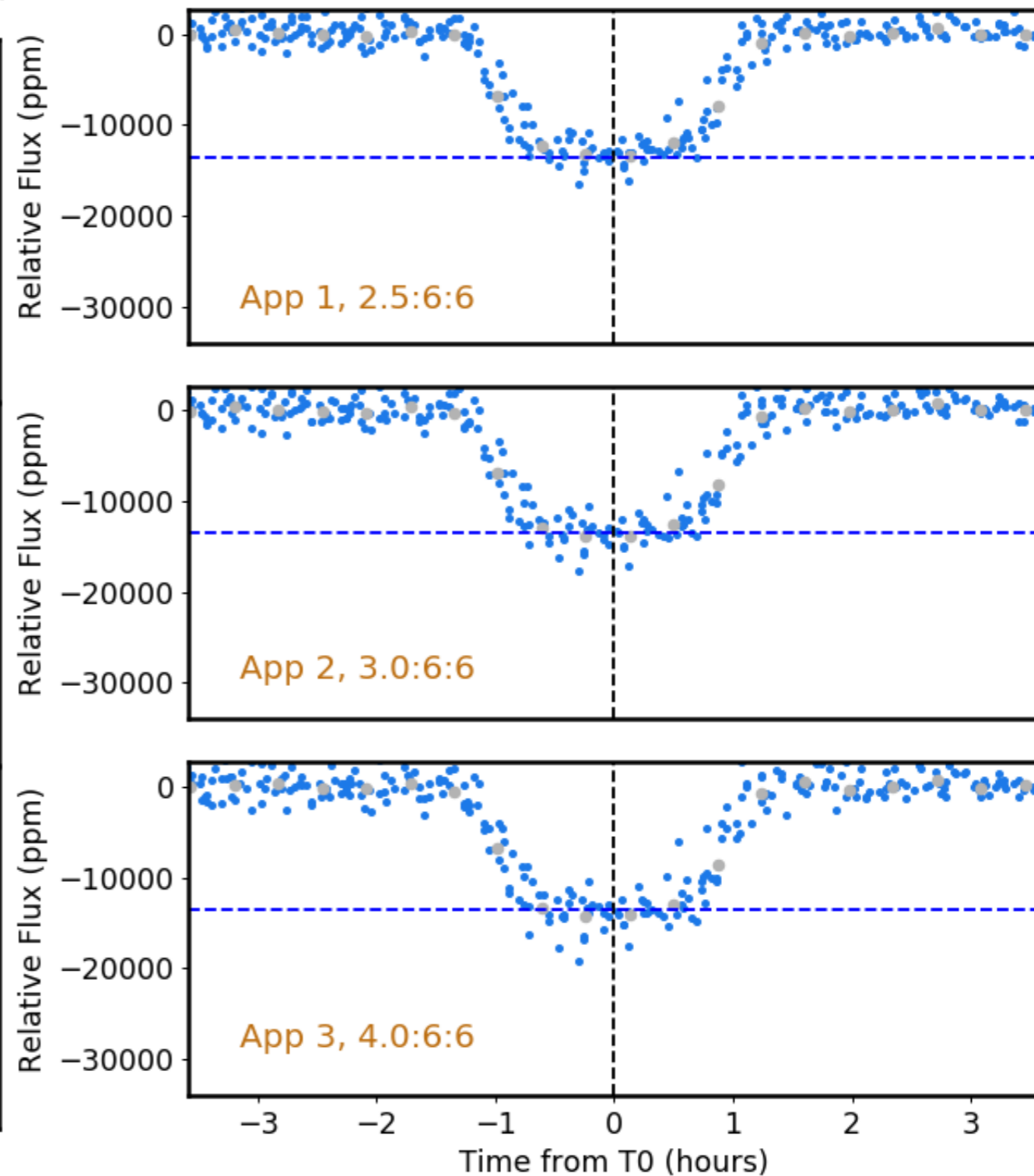
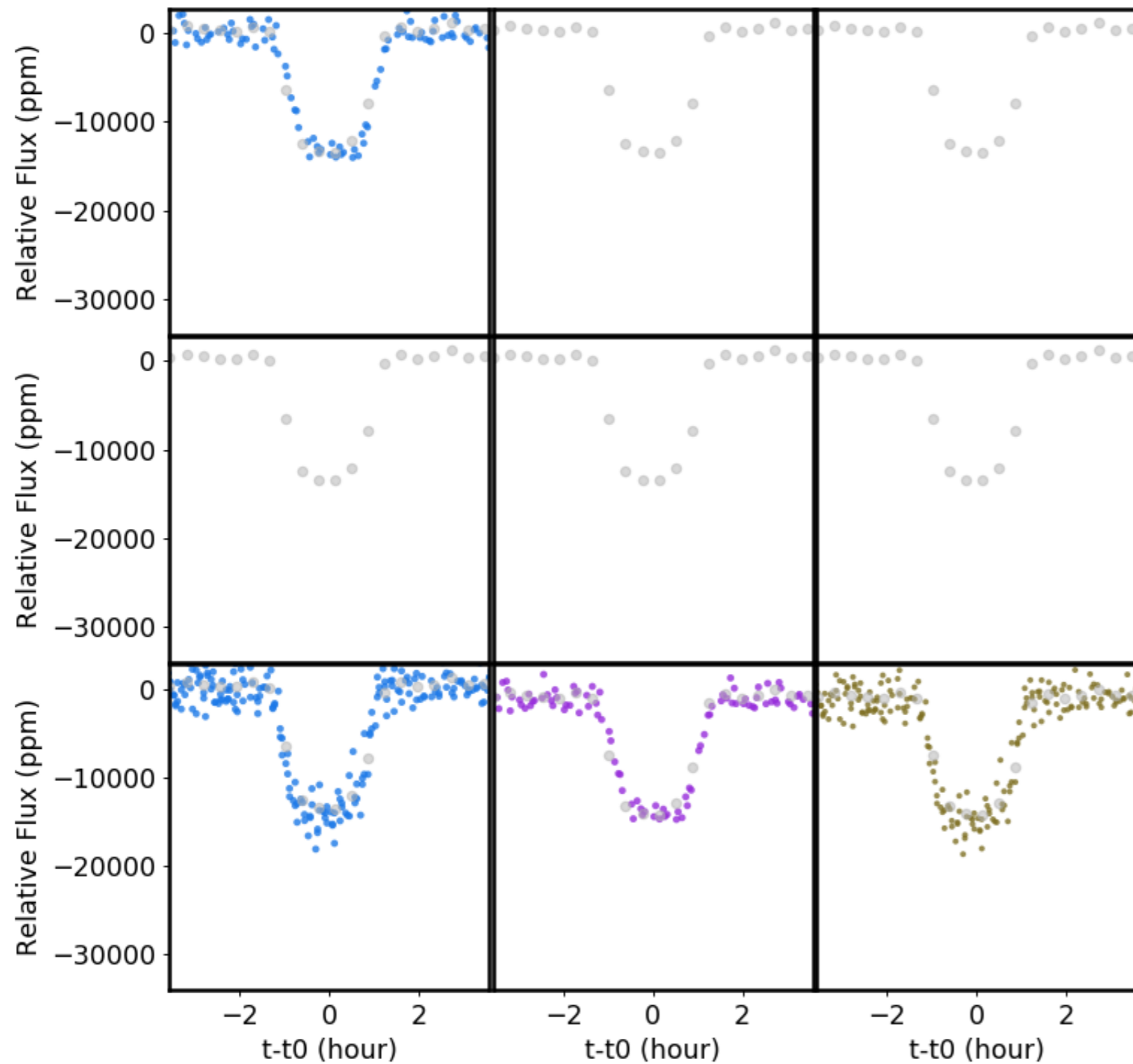
160148385.01: Detailed raw light curve information



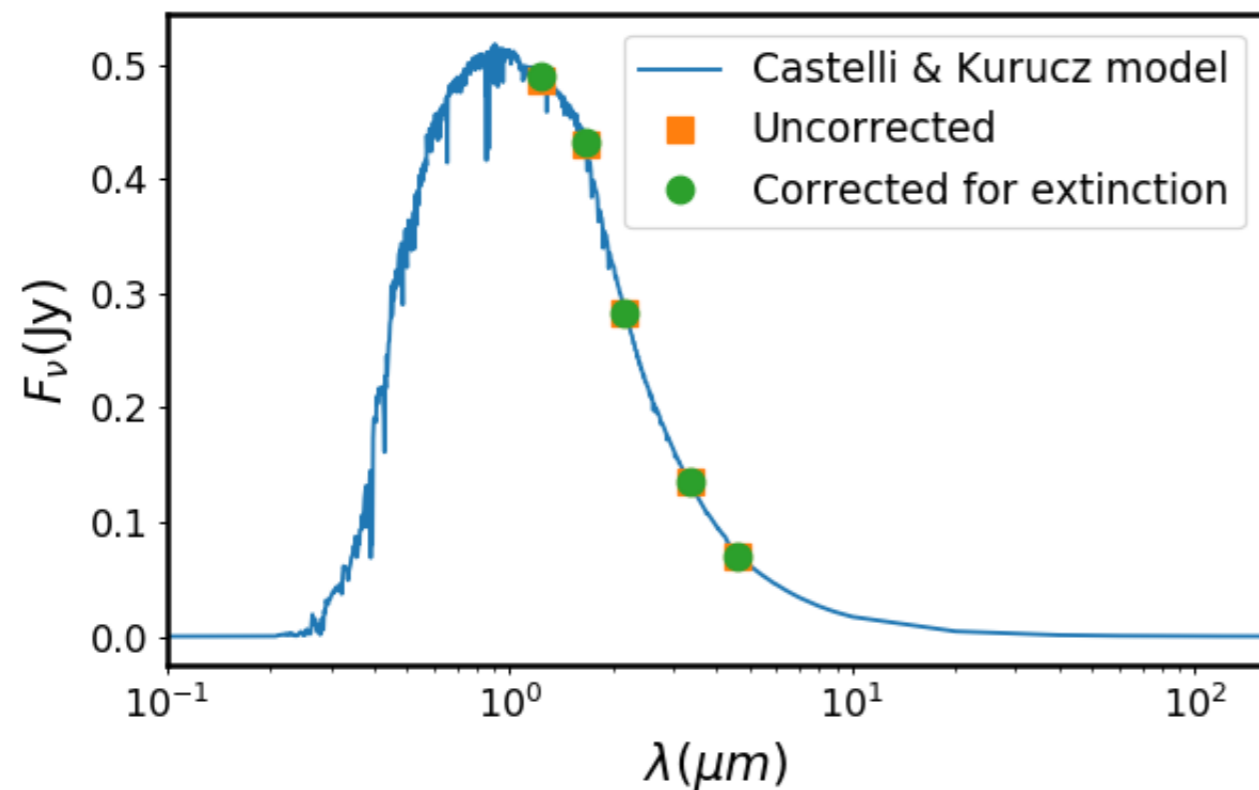
160148385.01: Detailed transit information

average of neighboring 32 transits

binned flux of all data

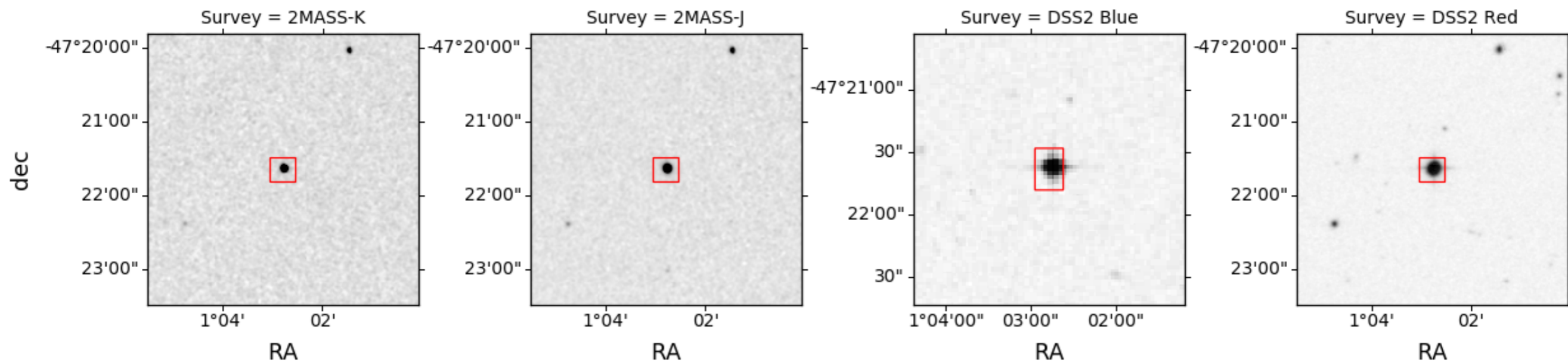


160148385: Extinction Curve & Finder Charts



Stellar Parameters

teff: 5560.0	rmag: None
Teffsed: 5750	zmag: None
logg: 4.33354	jmag: 11.267
loggsed: 3.0	hmag: 10.936
rad: 1.11655	kmag: 10.914
mass: 0.98	w1mag: 10.844
tmag: 11.9116	w2mag: 10.903
umag: None	w3mag: 11.013
bmag: 13.261	w4mag: 9.078
gmag: None	



160148385.01: BLS Analysis

160148385: BLS Data:

Depth: 0.014
Npointsaftertransit: 92
Npointsbeforetransit: 108
Npointsintransit: 98
Ntransits: 12
OOTmag: 11.9
Period: 3.425
Qingress: 0.208
Qtran: 0.029
Rednoise: 0
SDE: 11.0
SN: 55.6
SR: 0.0019
SignaltoPinknoise: 95.10
Tc: 1354.3166
Whitenoise: 0.0014
deltaChi2: -67
fraconenight: 0.1
i1: 0.02
i2: 0.05

